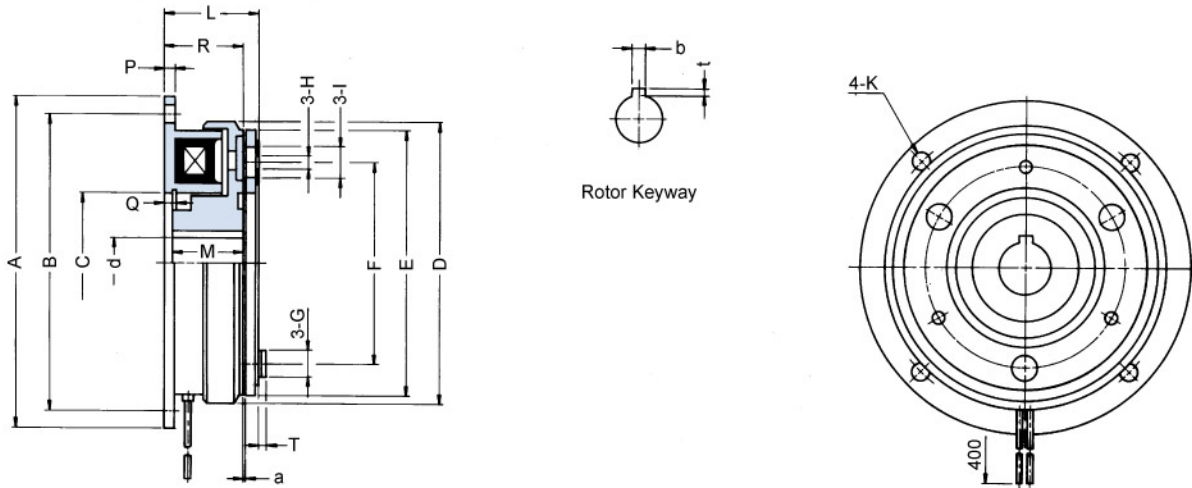


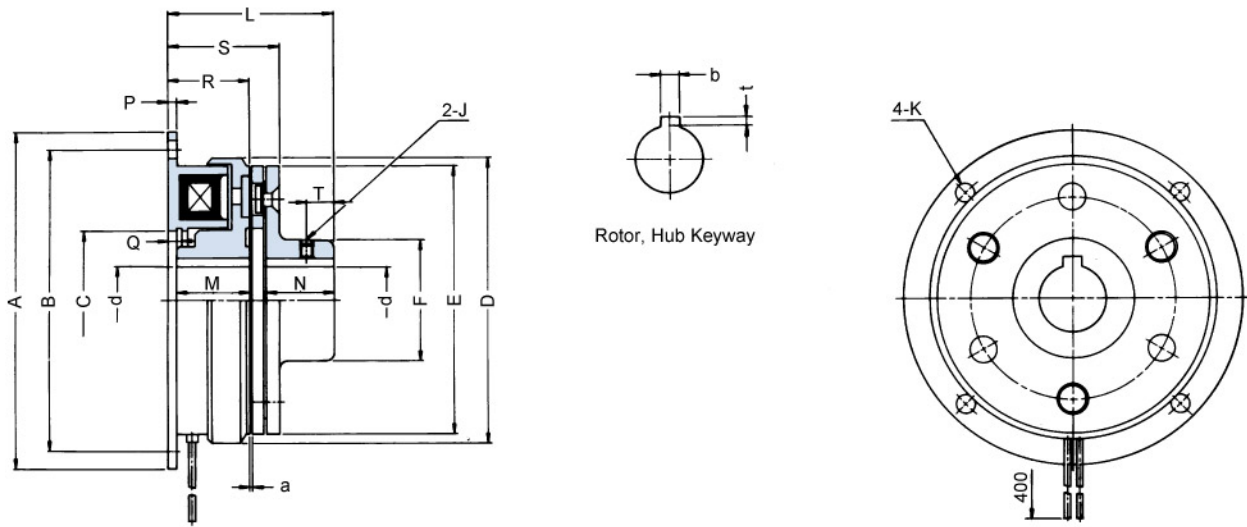
Model **FCD** Flange-mounted clutch Direct-mounted armature



Dimensions in mm.

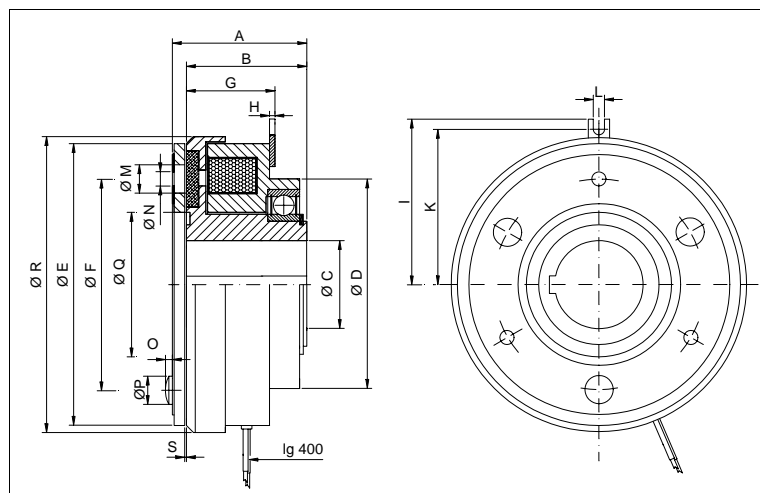
SIZE		0.6	1.2	2.5	5	10	20	40							
Static Torque	kgm	0.55	1.1	2.2	4.5	9	17	36							
Exciting Voltage	DC-V	24	24	24	24	24	24	24							
Capacity (at 20°C)	W	11	15	20	25	35	45	60							
Max. Revolution	RPM	5000	5000	4500	4000	3000	2500	2000							
Bore (Rotor)	Dia.	12	15	15	20	20	25	25	30	30	40	40	50	50	60
	keyway	4x1.5	5x2	5x2	5x2	5x2	7x3	7x3	7x3	7x3	10x3.5	10x3.5	12x3.5	12x3.5	15x5
Diameter	A ^{h8}	80	100	125	150	190	230	290							
	B	72	90	112	137	175	215	270							
	C ^{H7}	35	42	52	62	80	100	125							
	D	67	85	106	133	169	212	264							
	E	63	80	100	125	160	200	250							
	F	46	60	76	95	120	158	210							
	G	6	8	10	12	14	16	20							
	H	3.1	4.1	5.1	6.1	8.1	10.2	12.2							
	I	8	10	12	15	17	19	23							
	K	5	6	7	7	10	10	12							
Length	L	28	31	36	40.5	46.5	55.5	64							
	M	22	24	27	30	34	40	47							
	P	2	2.5	3	3.5	4	5	6							
	Q	3.5	4.3	5	5.5	6	7	8							
	R	24	26.5	30	33.5	37.5	44	51							
	T	2	2.5	3	3.5	4	4.5	5							
Air Gap	a	0.2	0.2	0.2	0.2	0.3	0.4	0.5							
Weight	kg	0.5	0.9	1.8	3.7	6.8	13	18.5							

Model **FCH** Flange-mounted clutch Hub-mounted armature



Dimensions in mm.

SIZE		0.6	1.2	2.5	5	10	20	40							
Static Torque	kgm	0.55	1.1	2.2	4.5	9	17	36							
Exciting Voltage	DC-V	24	24	24	24	24	24	24							
Capacity (at 20°C)	W	11	15	20	25	35	45	60							
Max. Revolution	RPM	5000	5000	4500	4000	3000	2500	2000							
Bore (Rotor, Hub)	Dia. dH7	12	15	15	20	20	25	25	30	30	40	40	50	50	60
	keyway bXt	4x1.5	5x2	5x2	5x2	5x2	7x3	7x3	7x3	7x3	10x3.5	10x3.5	12x3.5	12x3.5	15x5
Diameter	Ah8	80	100	125	150	190	230	290							
	B	72	90	112	137	175	215	270							
	CH7	35	42	52	62	80	100	125							
	D	67	85	106	133	169	212	264							
	E	63	80	100	125	160	200	250							
	F	26	31	42	50	65	85	105							
	J	M4	M5	M5	M6	M6	M8	M10							
	K	5	6	7	7	10	10	12							
Length	L	43	51	61	70.5	84.5	100.5	119							
	M	22	24	27	30	34	40	47							
	N	15	20	25	30	38	45	55							
	P	2	2.5	3	3.5	4	5	6							
	Q	3.5	4.3	5	5.5	6	7	8							
	R	24	26.5	30	33.5	37.5	44	51							
	S	31.5	35	41	46.5	53.5	64.5	75							
	T	6	8	10	12	15	18	22							
Air Gap	a	0.2	0.2	0.2	0.3	0.3	0.4	0.5							
Weight	kg	0.6	1.1	2	3.5	6.9	13	22							



**FRIZIONI
ELETTROMAGNETICHE
MONODISCO
Serie SCM**

**SINGLE PLATE
ELECTROMAGNETIC
CLUTCHES
Model SCM**

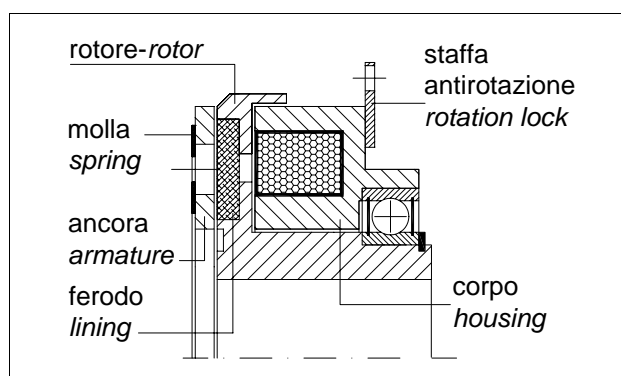
PRESTAZIONI (24 VCC) • PERFORMANCES (24VDC)

tipo size	coppia torque (Nm)	potenza power (W)	giri/min rpm	tempo inserzione engagement time (ms)	tempo disinserzione disengagement time (ms)	peso weight (kg)
SCM 039	0,6	6	1.500	15	3	0,07
SCM 045	0,9	6	1.500	20	4	0,10
SCM 054	1,8	8	1.500	25	5	0,2
SCM 065	3,6	10	1.500	35	6	0,33
SCM 080	7,5	15	8.000	35	10	0,79
SCM 100	15	20	6.000	40	20	1,2
SCM 125	30	28	5.000	60	30	2,24
SCM 150	60	35	4.000	80	45	3,86
SCM 190	120	50	3.000	100	60	7
SCM 230	240	68	3.000	115	70	13,3
SCM 290	480	85	2.000	130	80	21,2

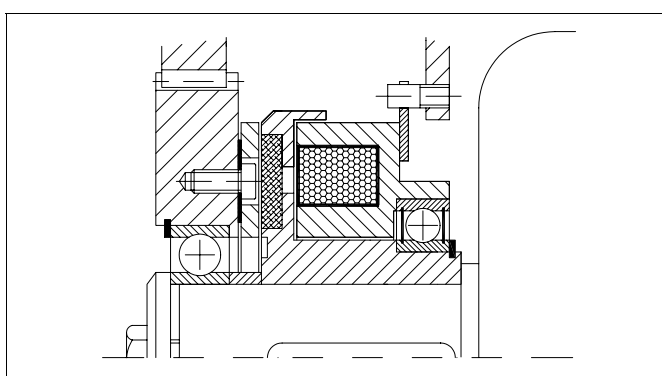
DIMENSIONI (mm) • DIMENSIONS (mm)

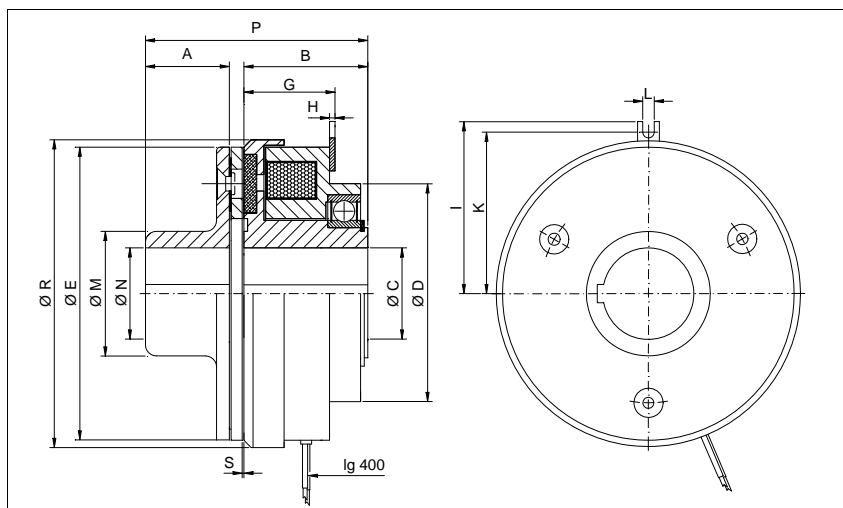
tipo - size	A	B	C max	D	E	F	G	H	K	I	L	M	N	O	P	Q	R	S
SCM 039	24,85	22,5	8	16	31	19,5	17,2	1,5	18	21	3,5	2x5	2x2,1	0,8	2x3,7	12,5	31	0,1
SCM 045	28,55	26	8	18	34	23	27,5	1,5	20	23	3,5	3x6	3x2,6	1,2	3x4,5	15	34	0,15
SCM 054	34,1	31	10	25	43	30	32,5	1,5	23	26	3,5	3x6,5	3x3,1	1,6	3x5	21	43	0,15
SCM 065	37,2	34	15	32	54	38	35,5	1,5	28	31	3,5	3x6,5	3x3,1	1,6	3x5	29	54	0,2
SCM 080	44	40	20	64	63	46	26	1,5	36	41	4,1	3x6,3	3x3,1	1,4	3x5,5	34,5	68	0,2
SCM 100	48	43,5	25	68	80	60	28	1,5	45	50	4,1	3x8	3x4,1	1,7	3x7	43,2	85,5	0,2
SCM 125	54,9	49	30	85	100	76	32,5	2,5	56	60	4,1	3x10,5	3x5,15	2,1	3x9	51,5	107	0,2
SCM 150	62	55	35	100	125	95	36	2,5	68,5	72,5	4,1	3x12	3x6,1	2,5	3x10	61,5	134,3	0,3
SCM 190	70,5	61,5	45	127	160	120	41,7	3,5	87,5	93,5	8,1	3x15	3x8,2	3	3x13	79,5	170	0,3
SCM 230	85,4	74	60	152,4	200	158	48,1	3,5	107,5	113,5	8,1	3x18	3x10,2	4	3x16	99,5	214,3	0,5
SCM 290	93,9	81	80	152,4	250	210	55,2	3,5	135	141	8,1	4x22	4x12,2	4,3	4x20	124,5	266,5	0,5

DENOMINAZIONE ELEMENTI - PARTS NAME



ESEMPIO DI MONTAGGIO - MOUNTING EXAMPLE





**FRIZIONI
ELETTRMAGNETICHE
MONODISCO
Serie SCM - 2**

**SINGLE PLATE
ELECTROMAGNETIC
CLUTCHES
Model SCM - 2**

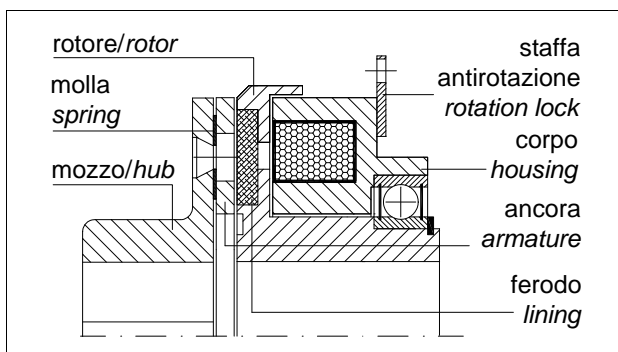
PRESTAZIONI (24 VCC) • PERFORMANCES (24VDC)

tipo size	coppia torque (Nm)	potenza power (W)	giri/min rpm	tempo inserzione engagement time (ms)	tempo disinserzione disengagement time (ms)	peso weight (kg)
SCM 039-2	0,6	6	1.500	15	3	0,08
SCM 045-2	0,9	6	1.500	20	4	0,12
SCM 054-2	1,8	8	1.500	25	5	0,21
SCM 065-2	3,6	10	1.500	35	6	0,35
SCM 080-2	7,5	15	8.000	35	10	0,83
SCM 100-2	15	20	6.000	40	20	1,28
SCM 125-2	30	28	5.000	60	30	2,4
SCM 150-2	60	35	4.000	80	45	4,15
SCM 190-2	120	50	3.000	100	60	7,3
SCM 230-2	240	68	3.000	115	70	14,5
SCM 290-2	480	85	2.000	130	80	22,9

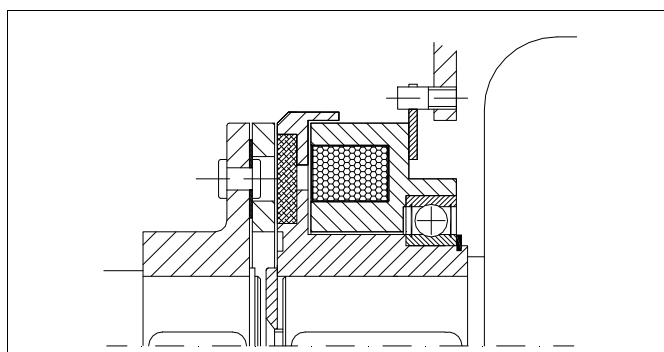
DIMENSIONI (mm) • DIMENSIONS (mm)

tipo - size	A	B	C max	D	E	G	H	K	I	L	M	N max	P	R	S
SCM 039-2	8	22,5	8	16	31	17,2	1,5	18	21	3,5	13	8	32,85	31	0,1
SCM 045-2	10	26	8	18	34	27,5	1,5	20	23	3,5	15	8	38,55	34	0,15
SCM 054-2	12	31	10	25	43	32,5	1,5	23	26	3,5	17	10	46,1	43	0,15
SCM 065-2	12	34	15	32	54	35,5	1,5	28	31	3,5	24	15	49,2	54	0,2
SCM 080-2	15	40	20	64	63	26	1,5	36	41	4,1	27	20	59	68	0,2
SCM 100-2	20	43,5	25	68	80	28	1,5	45	50	4,1	32	22	68	85,5	0,2
SCM 125-2	25	49	30	85	100	32,5	2,5	56	60	4,1	42	30	80	107	0,2
SCM 150-2	30	55	40	100	125	36	2,5	68,5	72,5	4,1	49	35	92	134,3	0,3
SCM 190-2	38	61,5	50	127	160	41,7	3,5	87,5	93,5	8,1	65	45	108,5	170	0,3
SCM 230-2	48	74	60	152,4	200	48,1	3,5	107,5	113,5	8,1	83	60	133,5	214,3	0,5
SCM 290-2	55	81	80	152,4	250	55,2	3,5	135	141	8,1	105	70	149	266,5	0,5

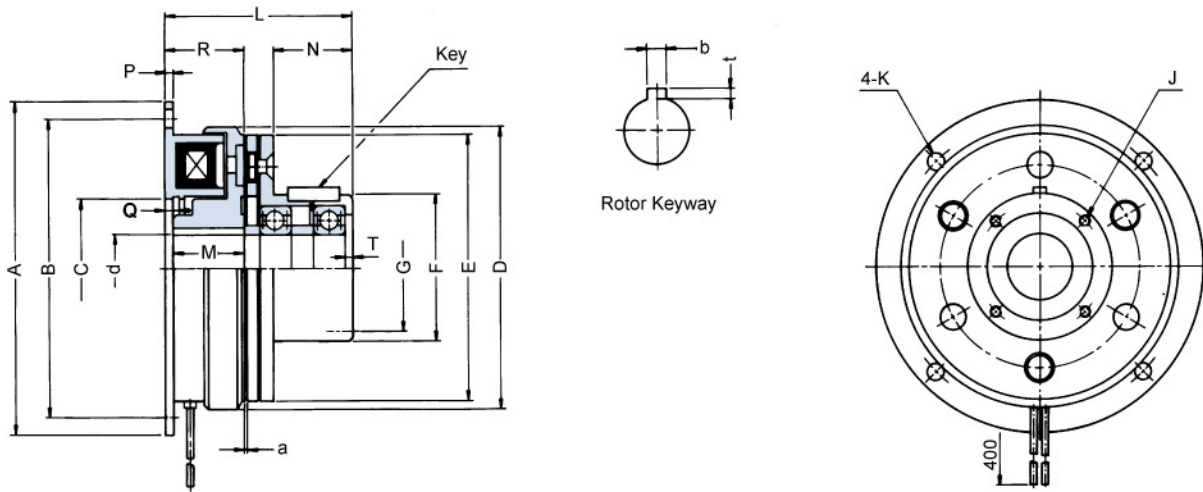
DENOMINAZIONE ELEMENTI • PARTS NAME



ESEMPIO DI MONTAGGIO • MOUNTING EXAMPLE



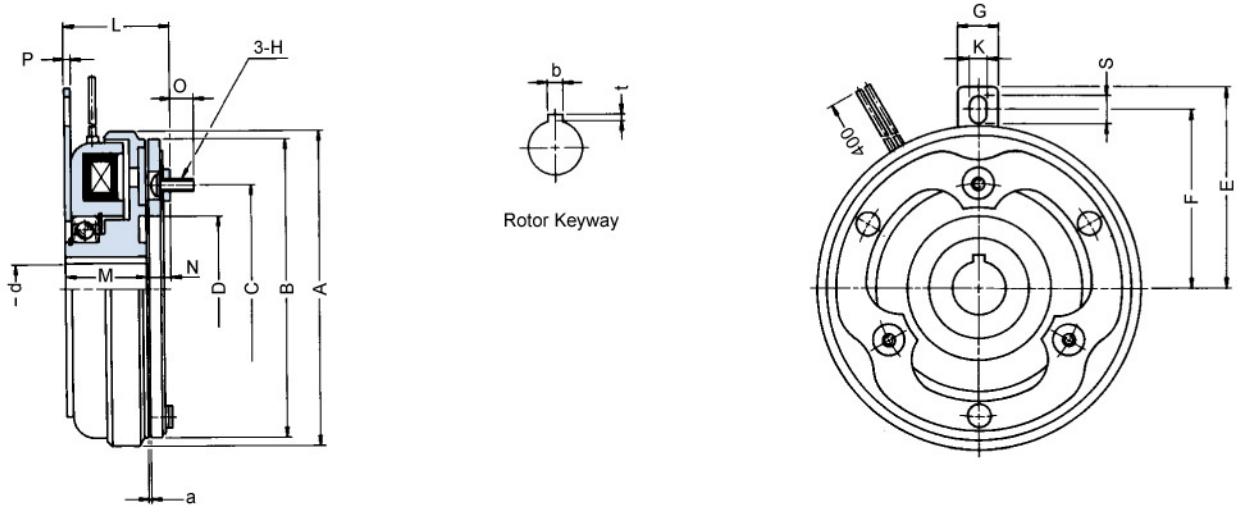
Model **FCB** Flange-mounted clutch Bearing-mounted armature



Dimensions in mm.

SIZE		0.6	1.2	2.5	5	10	20	40
Static Torque	kgm	0.55	1.1	2.2	4.5	9	17	36
Exciting Voltage	DC-V	24	24	24	24	24	24	24
Capacity (at 20°C)	W	11	15	20	25	35	45	60
Max. Revolution	RPM	5000	5000	4500	4000	3000	2500	2000
Bore	Dia. (Rotor, Arm Hbu) dH7	12	15	20	25	30	40	50
	keyway (Rotor) bxt	4x1.5	5x2	5x2	7x3	7x3	10x3.5	12x3.5
Key (Arm Hub)	WidthxHeight	4x4	5x5	5x5	7x7	7x7	10x8	12x8
Diameter	A ^{h8}	80	100	125	150	190	230	290
	B	72	90	112	137	175	215	270
	CH ⁷	35	42	52	62	80	100	125
	D	67	85	106	133	169	212	264
	E	63	80	100	125	160	200	250
	F _{j6}	38	45	55	64	75	90	115
	G	33	38	48	55	65	78	102
	J	3-M4	3-M4	4-M4	4-M4	4-M5	4-M6	8-M6
K	5	6	7	7	10	10	12	
Length	L	51.5	60	71	86.5	103.5	124.5	145
	M	22	24	27	30	34	40	47
	N	20	25	30	40	50	60	70
	P	2	2.5	3	3.5	4	5	6
	Q	3.5	4.3	5	5.5	6	7	8
	R	24	26.5	30	33.5	37.5	44	51
	T	2	2	3	3	4	5	6
Air Gap	a	0.2	0.2	0.2	0.3	0.3	0.4	0.5
Weight	kg	0.8	1.4	2.5	4.3	8	15	24

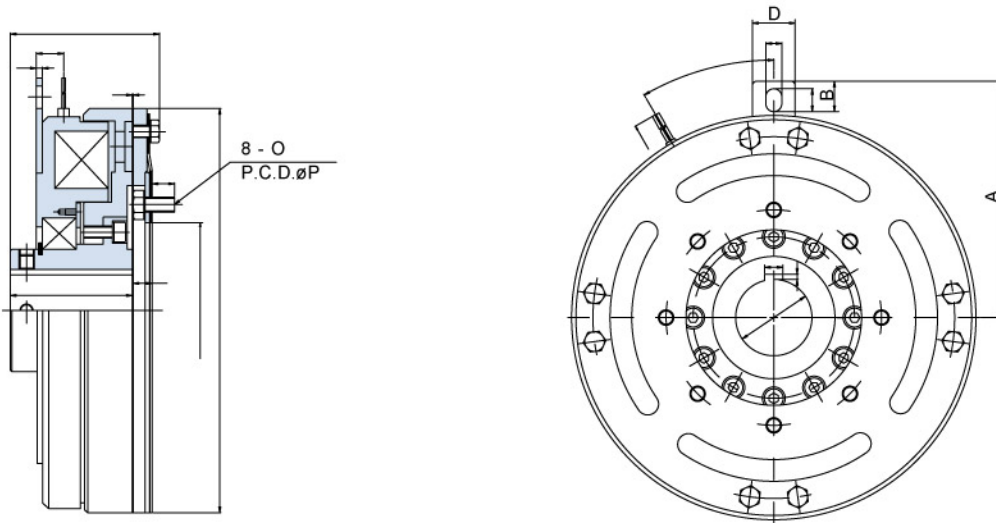
Model MCS Shaft-mounted clutch Direct-mounted armature



Dimensions in mm.

SIZE		0.6	1.2	2.5	5	10	20
Static Torque	kgm	0.6	1.2	2.5	5	10	20
Exciting Voltage	DC-V	24	24	24	24	24	24
Capacity (at 20°C)	W	11	15	22	30	38	50
Max. Revolution	RPM	5000	5000	4500	4000	3000	2500
Bore (Rotor)	Dia. d ^{H7}	12	15	20	25	30	40
	keyway bXt	4x1.5	5x2	5x2	7x3	7x3	10x3.5
Diameter	A	74	93	116	144	178	225
	B	70	88	110	137	172	217
	C	50	60	76	95	120	158
	D	36	46	54	67	89	108
	E	50	65	70	85	112	132
	F	42	58	62	77	100.5	120.5
	G	12	14	16	17	24	24
	H	M3	M4	M5	M6	M8	M10
Length	K	4.5	5.5	6.5	6.5	9	9
	L	30	33.5	38.5	44	56	66.5
	M	24	26.5	30	33.5	43	50
	N	6	7	8.5	10.5	13	16
	O	5	6.5	8	11	14	17.5
	P	1.6	2	2	2.5	3	3.2
Air Gap	a	0.2	0.2	0.2	0.2	0.3	0.4
Weight	kg	0.5	1.0	1.8	3.5	6.5	11.5

Model MCS Shaft-mounted clutch Direct-mounted armature

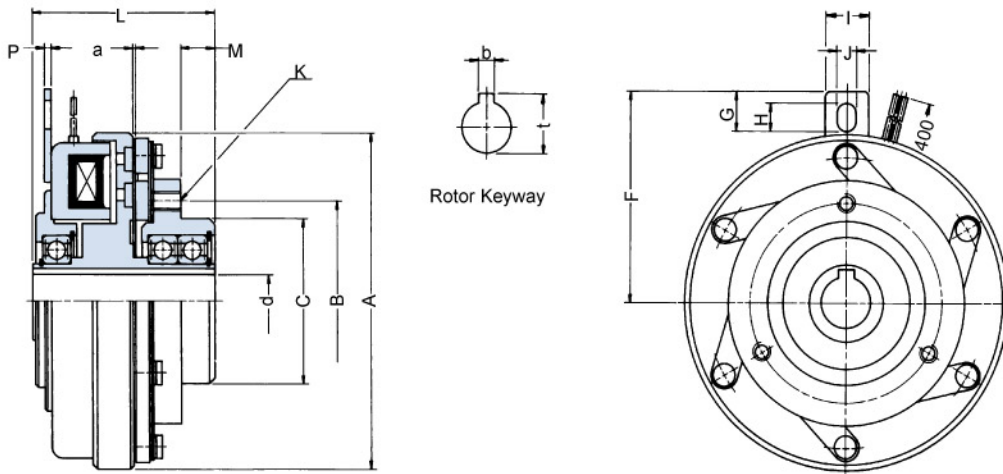


Dimensions in mm.

SIZE		40	65	100
Static Torque	kgm	40	65	100
Exciting Voltage	DC-V	24	24	24
Capacity (at 20°C)	W	75	115	150
Max. Revolution	RPM	1500	1000	1000
Bore (Rotor)	Dia. dH7	50	60	70
	keyway bxt	12x3.5	15x5	20x4.9
Length	A	155	185	240
	B	20	23	25
	C	15	18	18
	D	28	30	40
	E	10.5	13	13
	F	97.7	111.7	120
	G	18	20	30
	H	4	4.5	7
	J	14.5	14	22
	K	80	90	92
	L	13	15	22.5
Diameter	M	115	150	185
	N	265	317	416
	O	M10x1.5Px20L	M10x1.5Px20L	M12x1.75Px30L
	P	142	180	220
Air Gap	a	0.5	0.6	0.7
Weight	kg	40	48	68

Model HVC Shaft-mounted clutch

One-piece package



Dimensions in mm.

SIZE		6	12	25	40	70	100	160
Static Torque	kgm	6	12	25	40	70	100	160
Exciting Voltage	DC-V	24	24	24	24	24	24	24
Capacity (at 20°C)	W	30	40	50	60	80	100	120
Max. Revolution	RPM	3000	3000	2000	2000	1500	1000	1000
Bore (Rotor)	Dia. dH7	22	28	35	50	50	70	75
	keyway bxt	7X25.5	7X31.5	10X38.5	12X53.5	12X53.5	18X76	20X81
Diameter	A	143	171.5	203	244	285	325	368
	B	85	100	120	140	165	200	250
	C	70	80	100	115	140	165	215
	F	90	102	120	148	178	198	220
	G	10	11.5	13	20	26	26	30
	H	8	9	10.5	14	18	18	20
	I	14	14	16	24	35	35	30
	J	6.5	6.5	8.5	9	13	13	13
Length	K	3-M8	3-M8	3-M10	4-M10	8-M10	8-M12	8-M12
	L	80	90	90	116	138	154	165
	M	15	17	18	18	20	25	38
	N				80	85	105	
Air Gap	a	0.2	0.3	0.3	0.4	0.5	0.5	0.7
Weight	kg	4.5	7.4	11.5	21	44	51	76