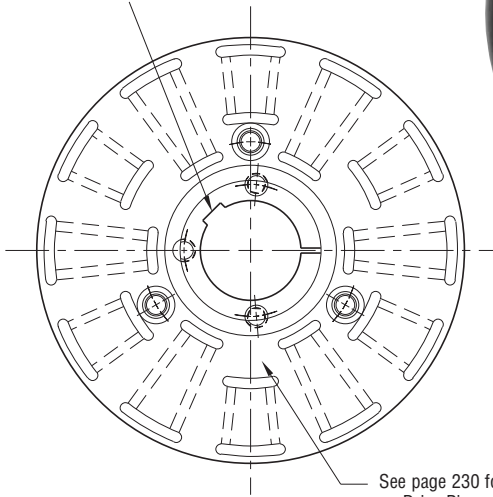


Clutch/Brake

PCB-825 Normal Duty

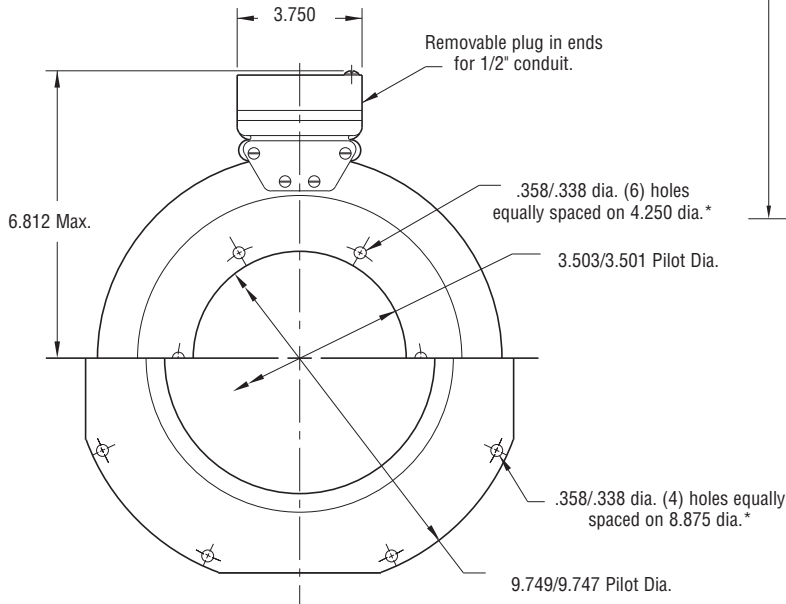


See page 252 for details on Bushings.

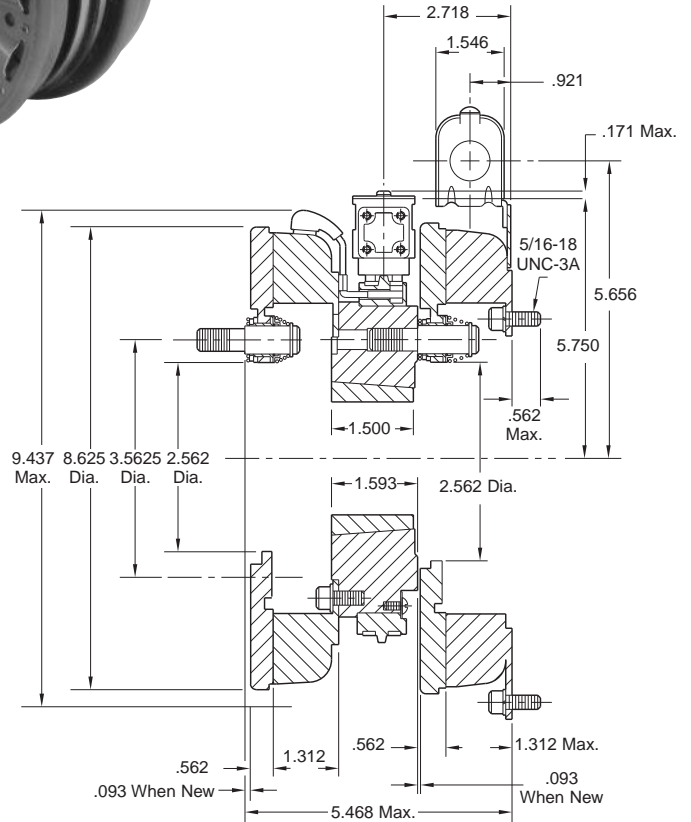


ARMATURE VIEW

See page 230 for details on Drive Pin mountings.



**MAGNET VIEW
(Inside & Outside Mounted)**



* Mounting holes are within .010 of true position relative to pilot diameter.

Customer Shall Maintain:

1. Concentricity of brake mounting pilot diameter with mounting shaft within .010 T.I.R.
2. Squareness of brake magnet mounting face with mounting shaft within .006 T.I.R. measured at magnet mounting bolt circle.

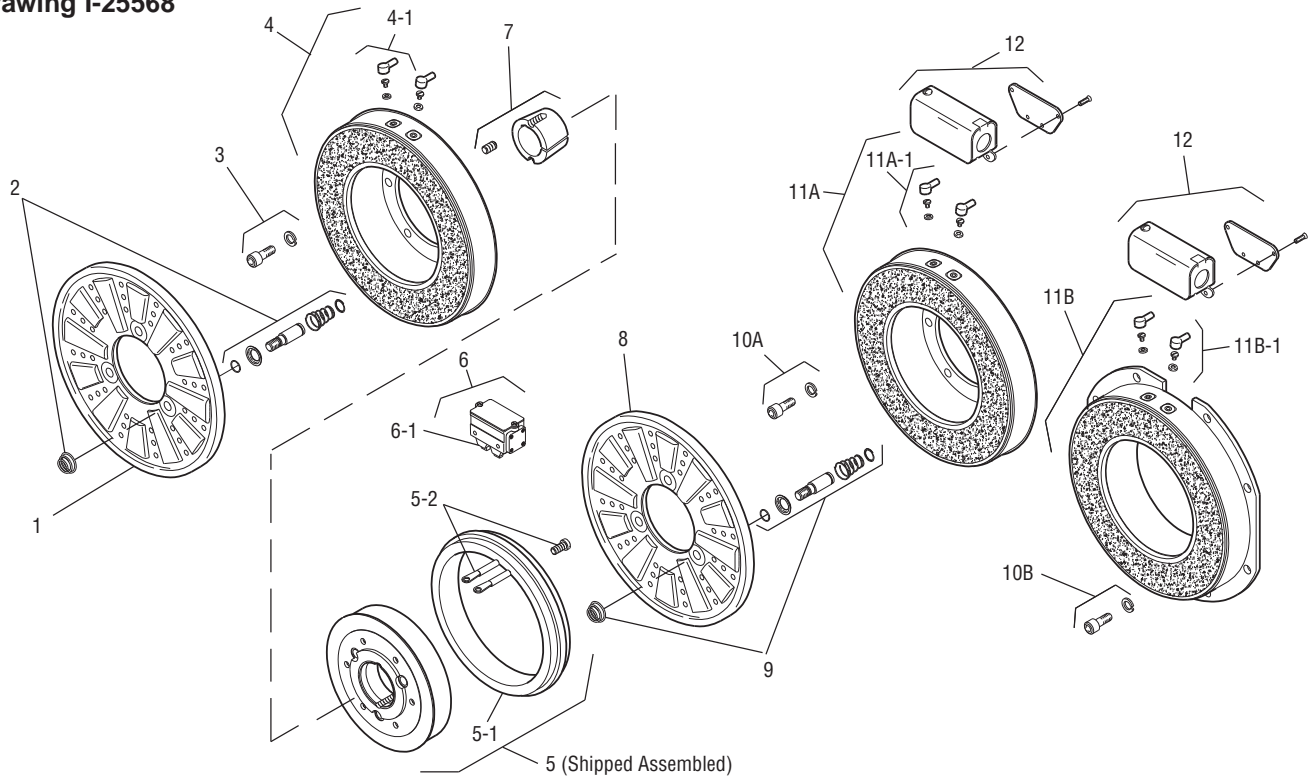
| | |
|------------------|----------------|
| Shaft Size | .500 – 1.625 |
| Static Torque | 125 lb. ft. |
| Maximum Speed | 4,000 rpm |
| Standard Voltage | D.C. 6, 24, 90 |

All dimensions are nominal unless otherwise noted.

Information on inertia and weights begins on page 239. Coil data is on pages 250 and 251.



Drawing I-25568



| Item | Description | Part Number | Qty. |
|------|---------------------------|----------------------|------|
| 1 | Armature | 5301-111-018 | 1 |
| 2 | Autogap Accessory | 5201-101-008 | 3 |
| 3 | Mounting Accessory | 5321-101-001 | 1 |
| 4 | Magnet | | 1 |
| | 6 Volt | 5301-631-002 | |
| | 24 Volt | 5301-631-004 | |
| | 90 Volt | 5301-631-005 | |
| 4-1 | Terminal Accessory | 5311-101-001 | 1 |
| 5 | Magnet Hub | | 1 |
| | Left Hand (shown) | 5301-541-001 | |
| | Right Hand | 5301-541-002 | |
| 5-1 | Collector Ring | 5301-749-001 | 1 |
| 5-2 | Collector Ring Assembly | 5301-101-002 | 1 |
| 6 | Brushholder | 5300-178-001 | 1 |
| 6-1 | Brush | 176-0001 | 4 |
| 7 | Bushing* | | 1 |
| | 1/2" to 1-5/8" Bore | 180-0131 to 180-0149 | |
| 8 | Armature | 5301-111-018 | 1 |
| 9 | Autogap Accessory | 5201-101-008 | 3 |
| 10A | Mounting Accessory - I.M. | 5321-101-001 | 1 |
| 10B | Mounting Accessory - O.M. | 5321-101-002 | 1 |
| 11A | Magnet - Inside Mounted | | 1 |
| | 6 Volt | 5311-631-002 | |
| | 24 Volt | 5311-631-003 | |
| | 90 Volt | 5311-631-004 | |

| Item | Description | Part Number | Qty. |
|-------|--------------------------|--------------|------|
| 11A-1 | Terminal Accessory | 5311-101-001 | 1 |
| 11B | Magnet - Outside Mounted | | 1 |
| | 6 Volt | 5311-631-007 | |
| | 24 Volt | 5311-631-009 | |
| | 90 Volt | 5311-631-008 | |
| 11B-1 | Terminal Accessory | 5311-101-001 | 1 |
| 12 | Conduit Box | 5200-101-011 | 1 |

How to Order:

1. Specify Voltage for Item 4 and Item 11A or 11B.
2. Specify left hand or right hand hub for Item 5. Bushing enters from magnet side for L.H. hub and from hub side for R.H.
3. Specify Bore Size for Item 7.
4. Specify Inside Mounted for Items 10A and 11A or Outside Mounted for Items 10B and 11B.
5. See Controls Section.

Example:

PCB-825 Clutch Brake per I-25568 - 90 Volt, Left Hand hub, 1" Bore, Inside Mounted

These units meet standards set forth in UL508 and are listed under guide card #NMTR2, file #59164. These units are CSA certified under file #LR11543

*See page 252 for specific part numbers.

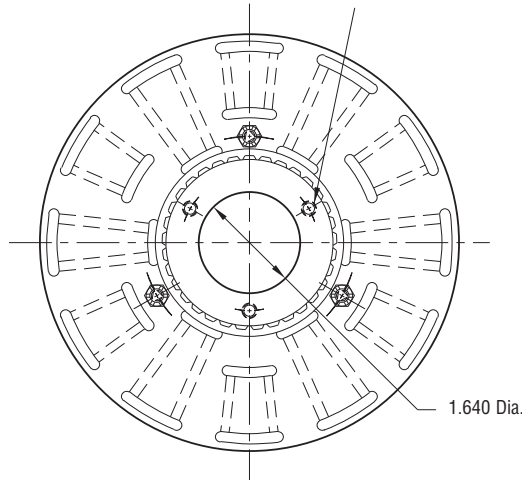
Refer to Service Manual P-205.

Clutch/Brake

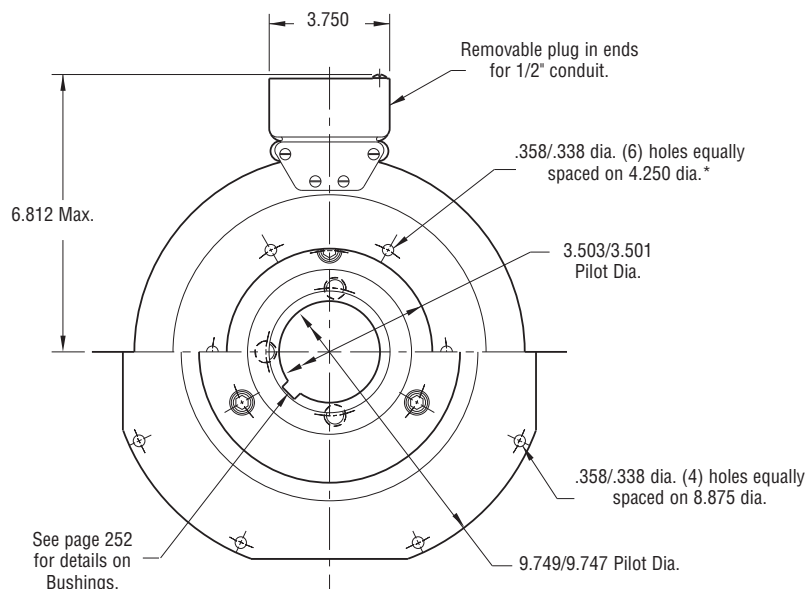
PCB-825 Heavy Duty



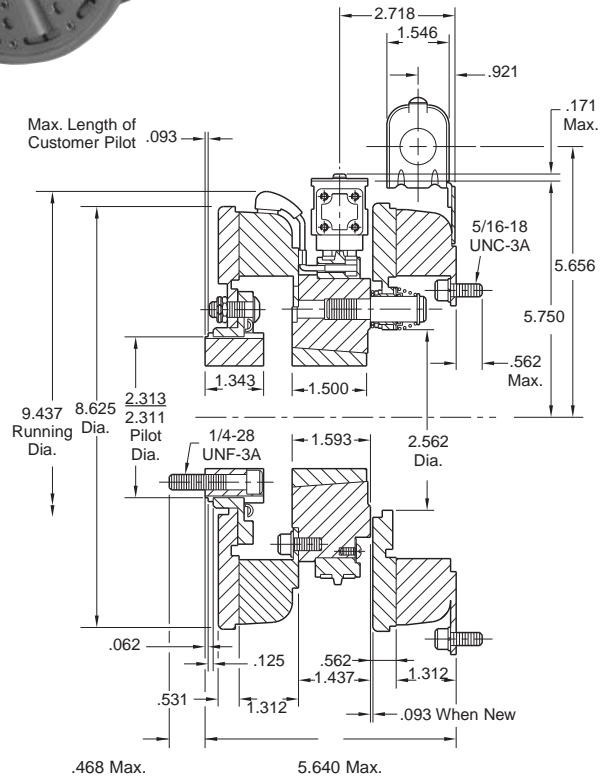
.271/.263 dia. (5) holes (hub) equally spaced on 2.015 dia. and within .003 of true position in relation to 2.313/2.311 pilot dia.



ARMATURE VIEW



MAGNET VIEW
(Inside & Outside Mounted)



* Mounting holes are within .010 of true position relative to pilot diameter.

| | |
|------------------|----------------|
| Shaft Size | .500 – 1.625 |
| Static Torque | 125 lb. ft. |
| Maximum Speed | 4,000 rpm |
| Standard Voltage | D.C. 6, 24, 90 |

Customer Shall Maintain:

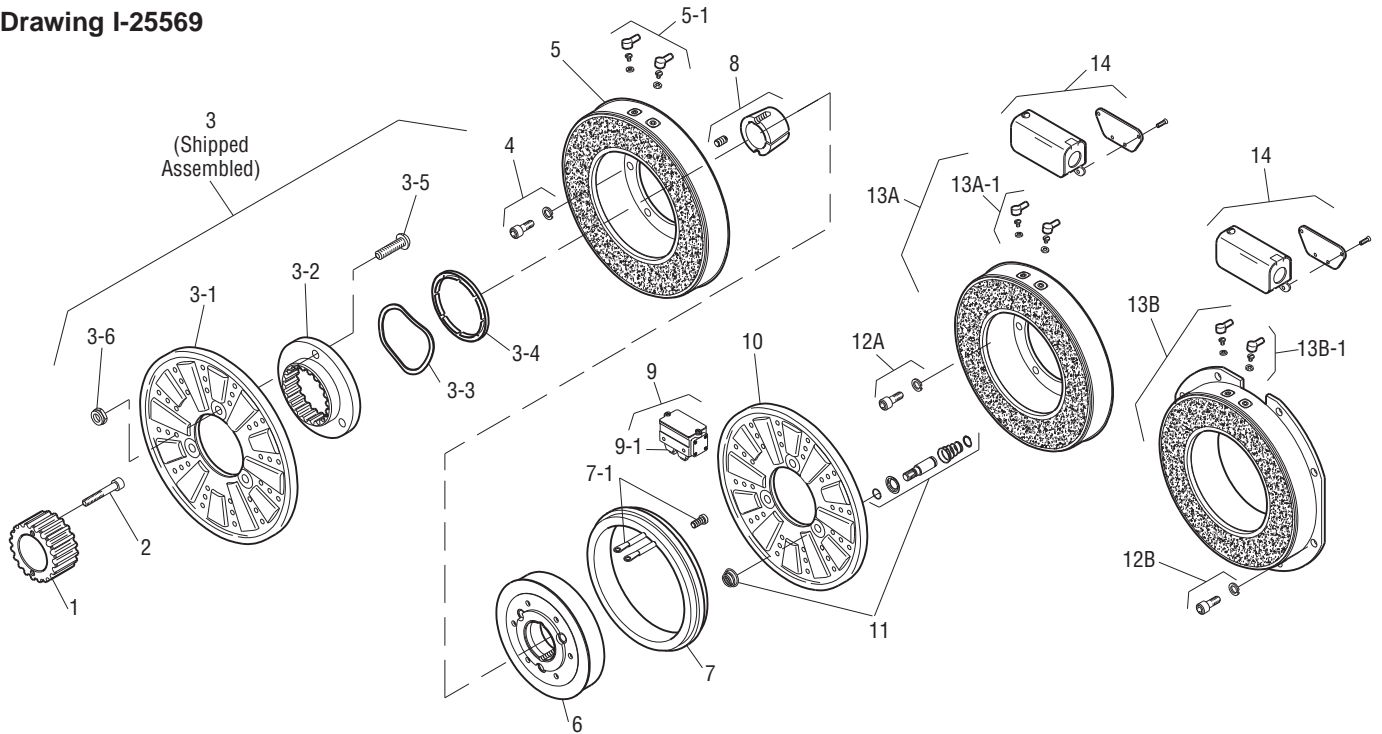
1. Concentricity of brake magnet mounting pilot diameter with mounting shaft within .010 T.I.R.
2. Squareness of brake magnet mounting face with magnet mounting shaft within .006 T.I.R.
3. Splined hub pilot diameter to be concentric with splined armature center of rotation within .010 T.I.R.

All dimensions are nominal unless otherwise noted.

Information on inertia and weights begins on page 239. Coil data is on pages 250 and 251.



Drawing I-25569



| Item | Description | Part Number | Qty. |
|------|---------------------------|----------------------|------|
| 1 | Splined Hub | 540-0146 | 1 |
| 2 | Mounting Accessory | 5201-101-001 | 1 |
| 3 | Armature Accessory | 5321-111-001 | 1 |
| 3-1 | Armature | 5321-111-022 | 1 |
| 3-2 | Armature Adapter | 104-0008 | 1 |
| 3-3 | Autogap Spring | 808-0054 | 1 |
| 3-4 | Retainer Ring | 748-0373 | 1 |
| 3-5 | Buttonhead Screw | 797-0272 | 3 |
| 3-6 | Locknut | 661-0004 | 3 |
| 4 | Mounting Accessory | 5321-101-001 | 1 |
| 5 | Magnet | | 1 |
| | 6 Volt | 5301-631-002 | |
| | 24 Volt | 5301-631-004 | |
| | 90 Volt | 5301-631-005 | |
| 5-1 | Terminal Accessory | 5311-101-001 | 1 |
| 6 | Magnet Hub | | 1 |
| | Right Hand | 5301-541-002 | |
| | Left Hand (shown) | 5301-541-001 | |
| 7 | Collector Ring | 5301-749-001 | 1 |
| 7-1 | Collector Ring Accessory | 5301-101-002 | 1 |
| 8 | Bushing* | 180-0131 to 180-0149 | 1 |
| 9 | Brushholder | 5300-178-001 | 1 |
| 9-1 | Brush | 176-0001 | 4 |
| 10 | Armature | 5301-111-018 | 1 |
| 11 | Autogap Accessory | 5201-101-008 | 3 |
| 12A | Mounting Accessory - I.M. | 5321-101-001 | 1 |
| 12B | Mounting Accessory - O.M. | 5321-101-002 | 1 |

| Item | Description | Part Number | Qty. |
|-------|------------------------------|--------------|------|
| 13A | Magnet - Inside Mounted | | 1 |
| | 6 Volt | 5311-631-002 | |
| | 24 Volt | 5311-631-003 | |
| | 90 Volt | 5311-631-004 | |
| 13A-1 | Terminal Accessory | 5311-101-001 | 1 |
| 13B | Magnet Hub - Outside Mounted | | 1 |
| | 6 Volt | 5311-631-007 | |
| | 24 Volt | 5311-631-009 | |
| | 90 Volt | 5311-631-008 | |
| 13B-1 | Terminal Accessory | 5311-101-001 | 1 |
| 14 | Conduit Box | 5200-101-011 | 1 |

How to Order:

1. Specify Voltage for Item 5 and Item 13A or 13B.
2. Specify left hand or right hand hub for Item 6. Bushing enters from magnet side for L.H. hub and from hub side for R.H. hub.
3. Specify Bore Size for Item 8.
4. Specify Inside Mounted for Items 12A and 13A or Outside Mounted for Items 12B and 13B.
5. See Controls Section.

Example:

PCB-825 Clutch Brake per I-25569 - 90 Volt, Left Hand hub, 1" Bore, Inside Mounted

These units meet the standards of UL508 and are listed under guide card #NMTR2, file #59164. These units are CSA certified under file #LR11543

*See page 252 for specific part numbers.

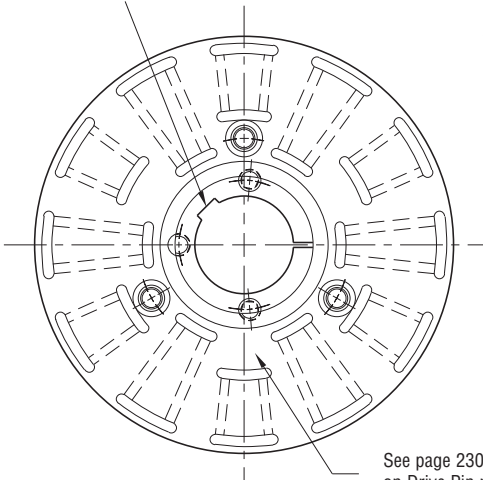
Refer to Service Manual P-205.

Clutch/Brake

PCB-1000 Normal Duty

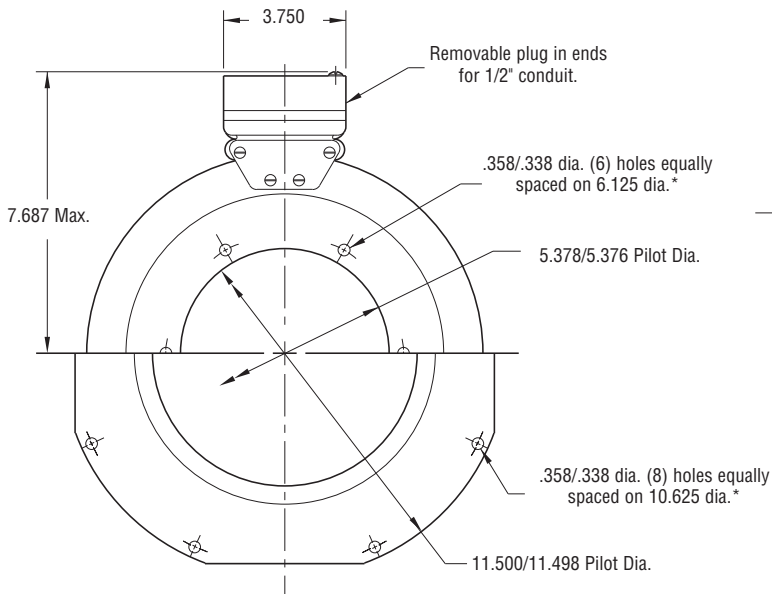


See page 252 for details on Bushings.

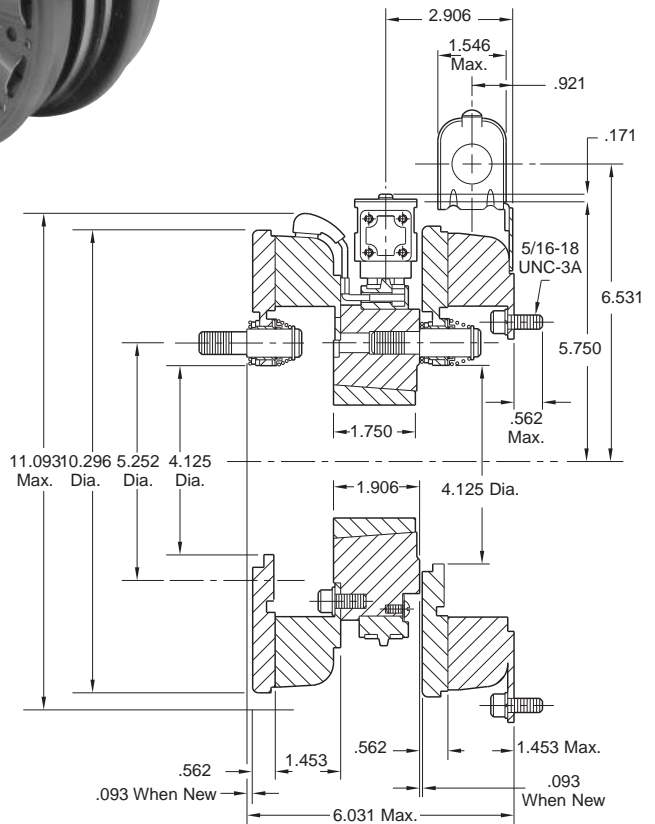


ARMATURE VIEW

See page 230 for details on Drive Pin mountings.



MAGNET VIEW
(Inside & Outside Mounted)



* Mounting holes are within .010 of true position relative to pilot diameter.

Customer Shall Maintain:

1. Concentricity of brake mounting pilot diameter with mounting shaft within .010 T.I.R.
2. Squareness of brake magnet mounting face with mounting shaft within .006 T.I.R. measured at magnet mounting bolt circle.

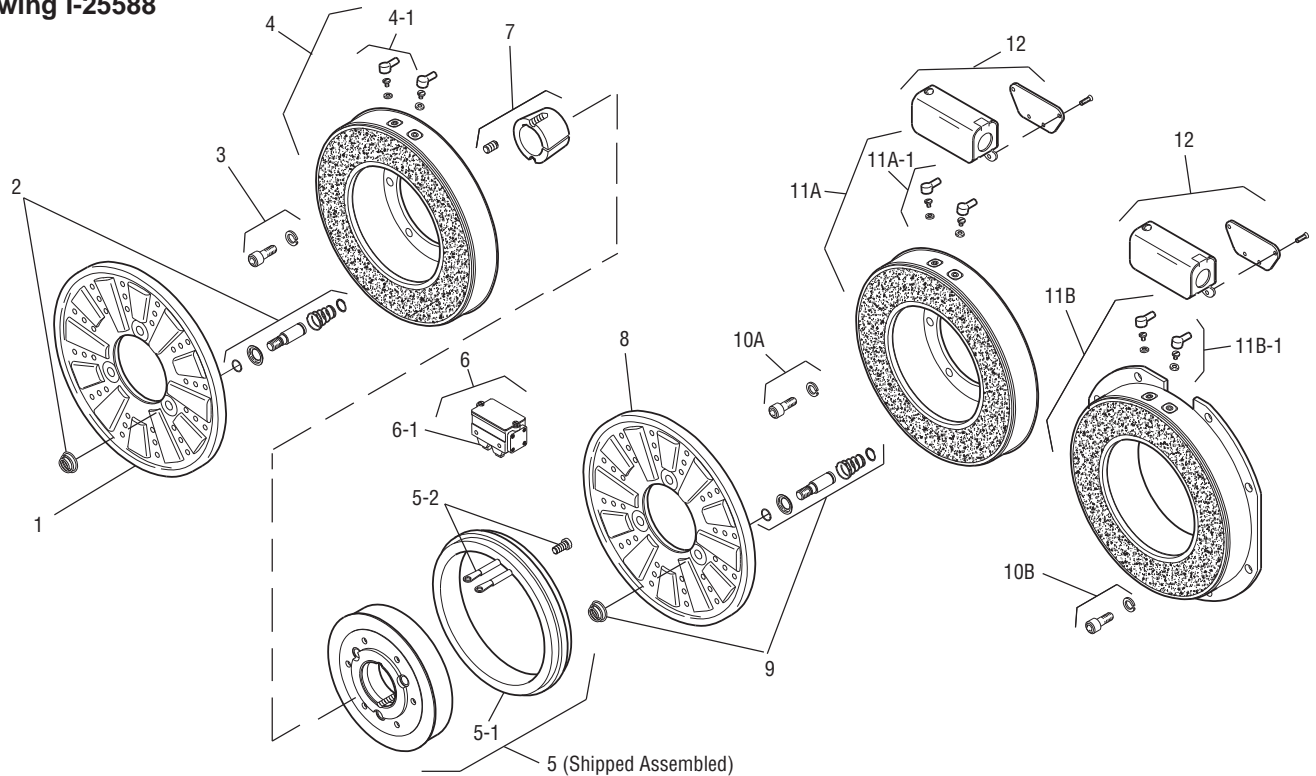


| | |
|------------------|----------------|
| Shaft Size | .500 – 2.500 |
| Static Torque | 240 lb. ft. |
| Maximum Speed | 3,600 rpm |
| Standard Voltage | D.C. 6, 24, 90 |

All dimensions are nominal unless otherwise noted.

Information on inertia and weights begins on page 239. Coil data is on pages 250 and 251.

Drawing I-25588



| Item | Description | Part Number | Qty. |
|------|---------------------------|----------------------|------|
| 1 | Armature | 5302-111-013 | 1 |
| 2 | Autogap Accessory | 5201-101-008 | 3 |
| 3 | Mounting Accessory | 5321-101-001 | 1 |
| 4 | Magnet | | 1 |
| | 6 Volt | 5302-631-003 | |
| | 24 Volt | 5302-631-014 | |
| | 90 Volt | 5302-631-005 | |
| 4-1 | Terminal Accessory | 5311-101-001 | 1 |
| 5 | Magnet Hub | | 1 |
| | Left Hand (shown) | 5302-541-001 | |
| | Right Hand | 5302-541-002 | |
| 5-1 | Collector Ring | 5301-749-001 | 1 |
| 5-2 | Collector Ring Assembly | 5302-101-002 | 1 |
| 6 | Brushholder | 5300-178-001 | 1 |
| 6-1 | Brush | 176-0001 | 4 |
| 7 | Bushing* | | 1 |
| | 1/2" to 2-1/2" Bore | 180-0185 to 180-0217 | |
| 8 | Armature | 5302-111-013 | 1 |
| 9 | Autogap Accessory | 5201-101-008 | 3 |
| 10A | Mounting Accessory - I.M. | 5321-101-001 | 1 |
| 10B | Mounting Accessory - O.M. | 5321-101-002 | 2 |
| 11A | Magnet - Inside Mounted | | 1 |
| | 6 Volt | 5312-631-004 | |
| | 24 Volt | 5312-631-005 | |
| | 90 Volt | 5312-631-006 | |

| Item | Description | Part Number | Qty. |
|-------|--------------------------|--------------|------|
| 11A-1 | Terminal Accessory | 5311-101-001 | 1 |
| 11B | Magnet - Outside Mounted | | 1 |
| | 6 Volt | 5312-631-011 | |
| | 24 Volt | 5312-631-013 | |
| | 90 Volt | 5312-631-012 | |
| 11B-1 | Terminal Accessory | 5311-101-001 | 1 |
| 12 | Conduit Box | 5200-101-011 | 1 |

How to Order:

1. Specify Voltage for Item 4 and Item 11A or 11B.
2. Specify left hand or right hand hub for Item 5. Bushing enters from magnet side for L.H. hub and from hub side for R.H.
3. Specify Bore Size for Item 7.
4. Specify Inside Mounted for Items 10A and 11A or Outside Mounted for Items 10B and 11B.
5. See Controls Section.

Example:

PCB-1000 Clutch Brake per I-25588 - 90 Volt, Left Hand hub, 1-1/2" Bore, Inside Mounted

These units meet standards set forth in UL508 and are listed under guide card #NMTR2, file #59164. These units are CSA certified under file #LR11543

*See page 252 for specific part numbers.

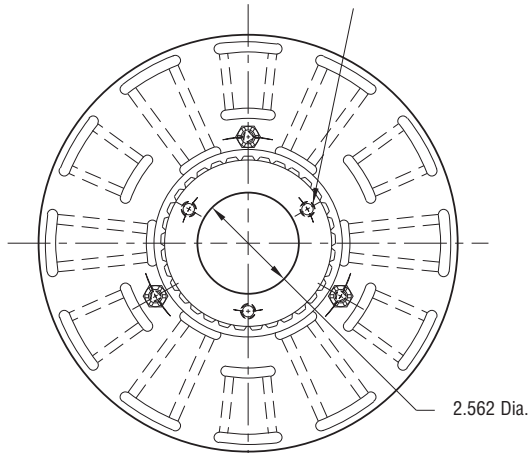
Refer to Service Manual P-205.

Clutch/Brake

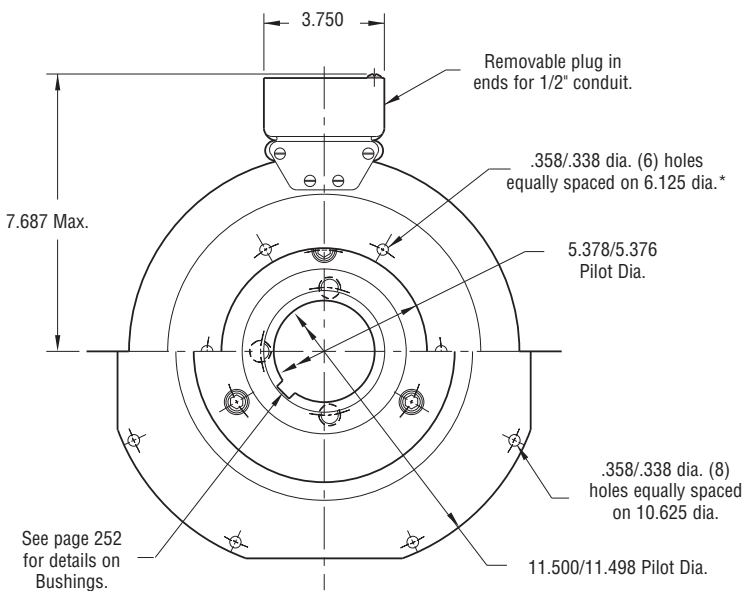
PCB-1000 Heavy Duty



.397/.388 dia. (3) holes (hub) equally spaced on 3.187 dia. and within .003 of true position in relation to 4.001/3.999 pilot dia.



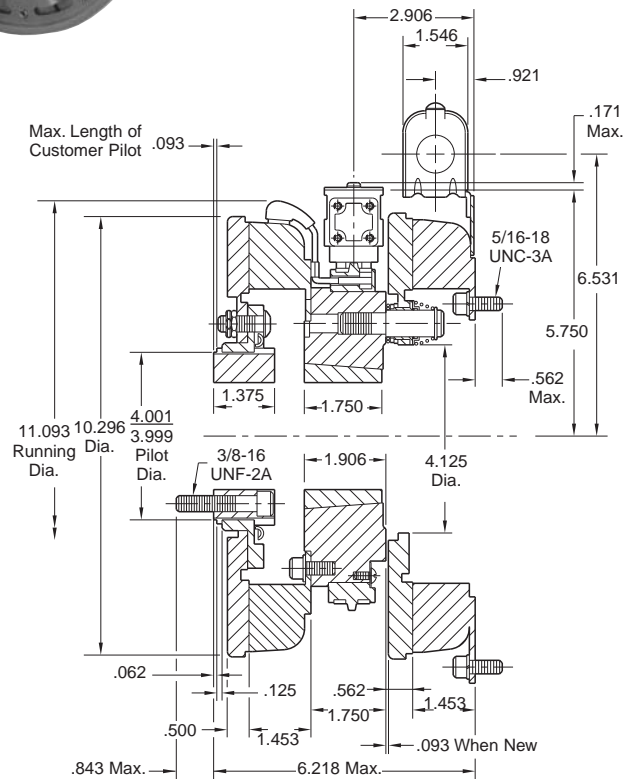
ARMATURE VIEW



MAGNET VIEW
(Inside & Outside Mounted)

Customer Shall Maintain:

1. Concentricity of brake magnet mounting pilot diameter with mounting shaft within .010 T.I.R.
2. Squareness of brake magnet mounting face with magnet mounting shaft within .006 T.I.R.
3. Splined hub pilot diameter to be concentric with splined armature center of rotation within .010 T.I.R.



* Mounting holes are within .010 of true position relative to pilot diameter.

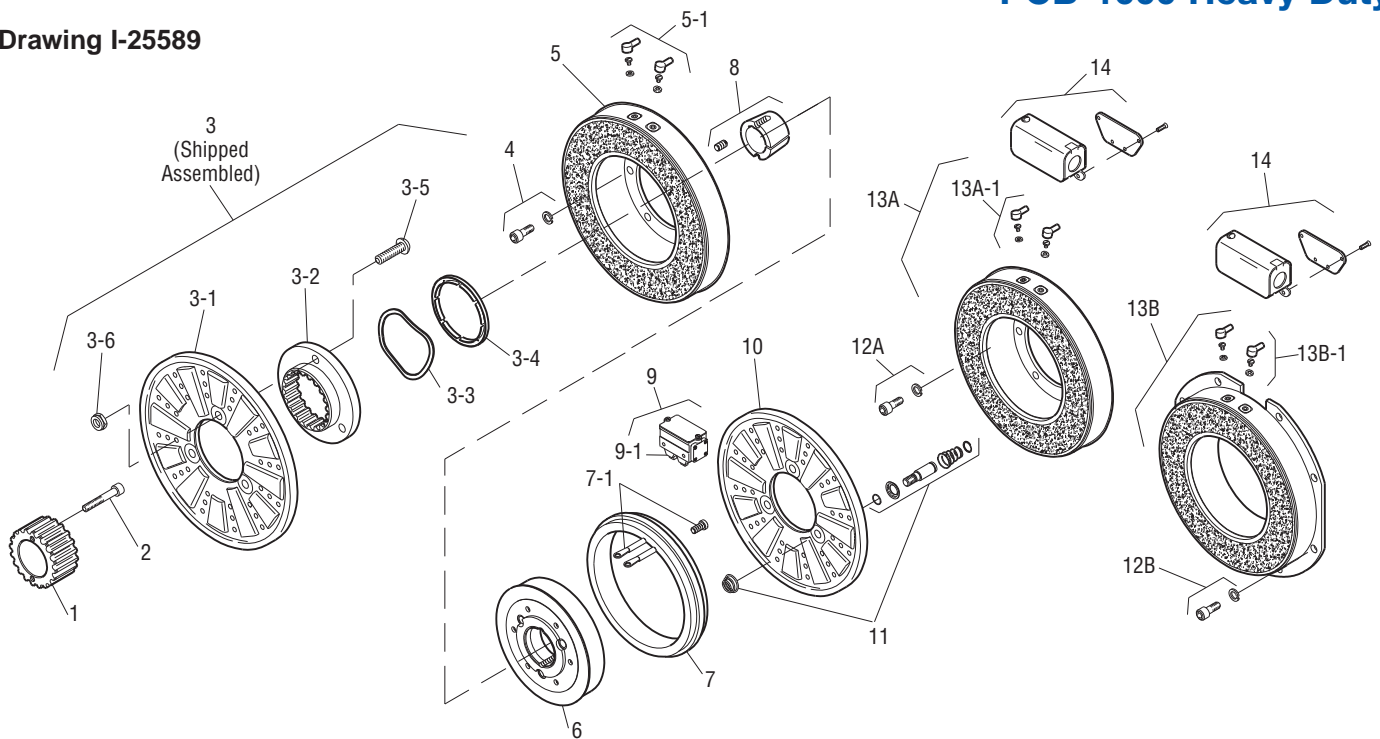
| | |
|------------------|----------------|
| Shaft Size | .500 – 2.500 |
| Static Torque | 240 lb. ft. |
| Maximum Speed | 3,600 rpm |
| Standard Voltage | D.C. 6, 24, 90 |

All dimensions are nominal unless otherwise noted.

Information on inertia and weights begins on page 239. Coil data is on pages 250 and 251.



Drawing I-25589



| Item | Description | Part Number | Qty. |
|------|---------------------------|----------------------|------|
| 1 | Splined Hub | 540-0147 | 1 |
| 2 | Mounting Accessory | 5202-101-001 | 1 |
| 3 | Armature Accessory | 5322-111-002 | 1 |
| 3-1 | Armature | 5322-111-036 | 1 |
| 3-2 | Armature Adapter | 104-0009 | 1 |
| 3-3 | Autogap Spring | 808-0061 | 1 |
| 3-4 | Retainer Ring | 748-0374 | 1 |
| 3-5 | Buttonhead Screw | 797-0272 | 3 |
| 3-6 | Locknut | 661-0004 | 3 |
| 4 | Mounting Accessory | 5321-101-001 | 1 |
| 5 | Magnet | | 1 |
| | 6 Volt | 5302-631-003 | |
| | 24 Volt | 5302-631-014 | |
| | 90 Volt | 5302-631-005 | |
| 5-1 | Terminal Accessory | 5311-101-001 | 1 |
| 6 | Magnet Hub | | 1 |
| | Right Hand | 5302-541-002 | |
| | Left Hand (shown) | 5302-541-001 | |
| 7 | Collector Ring | 5301-749-001 | 1 |
| 7-1 | Collector Ring Accessory | 5301-101-002 | 1 |
| 8 | Bushing* | 180-0185 to 180-0217 | 1 |
| 9 | Brushholder | 5300-178-001 | 1 |
| 9-1 | Brush | 176-0001 | 4 |
| 10 | Armature | 5302-111-013 | 1 |
| 11 | Autogap Accessory | 5201-101-008 | 3 |
| 12A | Mounting Accessory - I.M. | 5321-101-001 | 1 |
| 12B | Mounting Accessory - O.M. | 5321-101-002 | 2 |

| Item | Description | Part Number | Qty. |
|-------|------------------------------|--------------|------|
| 13A | Magnet - Inside Mounted | | 1 |
| | 6 Volt | 5312-631-004 | |
| | 24 Volt | 5312-631-005 | |
| | 90 Volt | 5312-631-006 | |
| 13A-1 | Terminal Accessory | 5311-101-001 | 1 |
| 13B | Magnet Hub - Outside Mounted | | 1 |
| | 6 Volt | 5312-631-011 | |
| | 24 Volt | 5312-631-013 | |
| | 90 Volt | 5312-631-012 | |
| 13B-1 | Terminal Accessory | 5311-101-001 | 1 |
| 14 | Conduit Box | 5200-101-011 | 1 |

How to Order:

1. Specify Voltage for Item 5 and Item 13A or 13B.
2. Specify left hand or right hand hub for Item 6. Bushing enters from magnet side for L.H. hub and from hub side for R.H. hub.
3. Specify Bore Size for Item 7.
4. Specify Inside Mounted for Items 12A and 13A or Outside Mounted for Item 12B and 13B.
5. See Controls Section.

Example:

PCB-1000 Clutch Brake per I-25589 - 90 Volt, Left Hand hub, 1-1/2" Bore, Inside Mounted

These units meet the standards of UL508 and are listed under guide card #NMTR2, file #59164. These units are CSA certified under file #LR11543.

*See page 252 for specific part numbers.

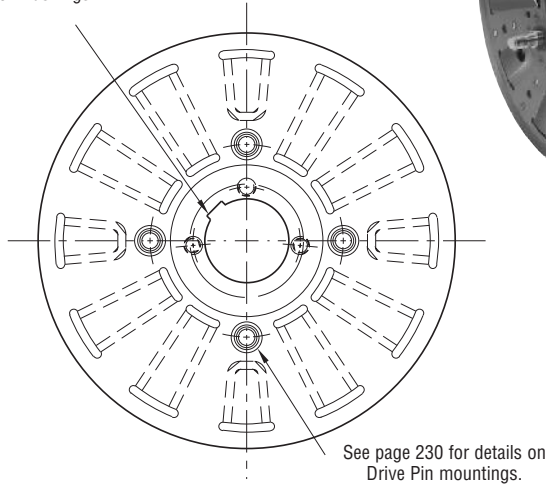
Refer to Service Manual P-205.

Clutch/Brake

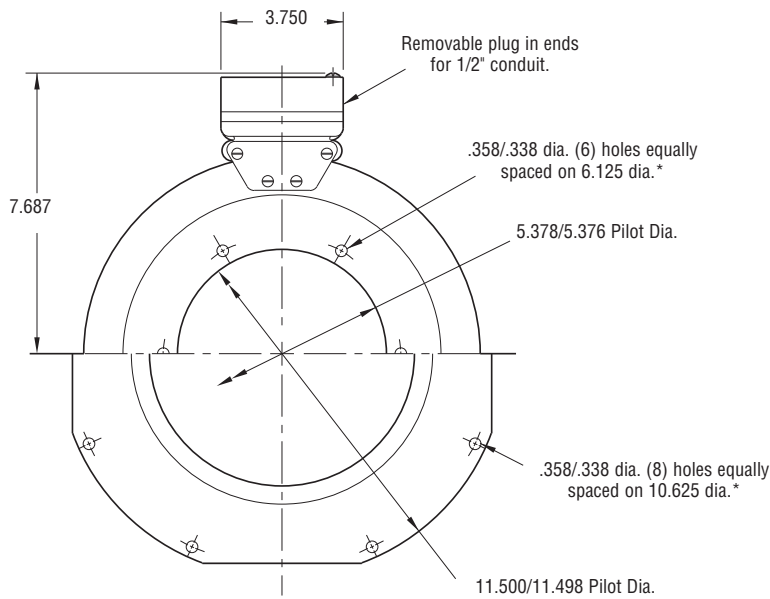
PCB-1225/1000 Normal Duty



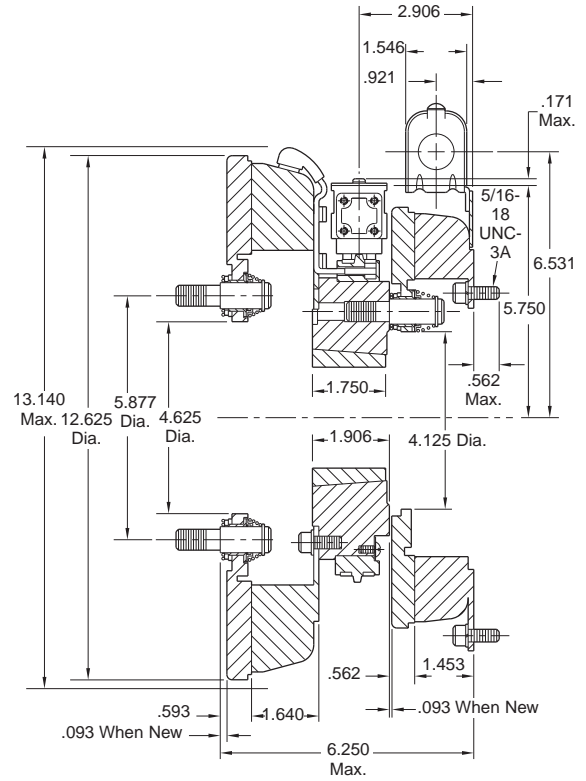
See page 252 for details on Bushings.



ARMATURE VIEW



MAGNET VIEW
(Inside & Outside Mounted)



* Mounting holes are within .010 of true position relative to pilot diameter.

| | |
|----------------------|----------------|
| Shaft Size | .500 – 2.500 |
| Static Torque Clutch | 465 lb. ft. |
| Static Torque Brake | 240 lb. ft. |
| Maximum Speed | 3,000 rpm |
| Standard Voltage | D.C. 6, 24, 90 |

All dimensions are nominal unless otherwise noted.

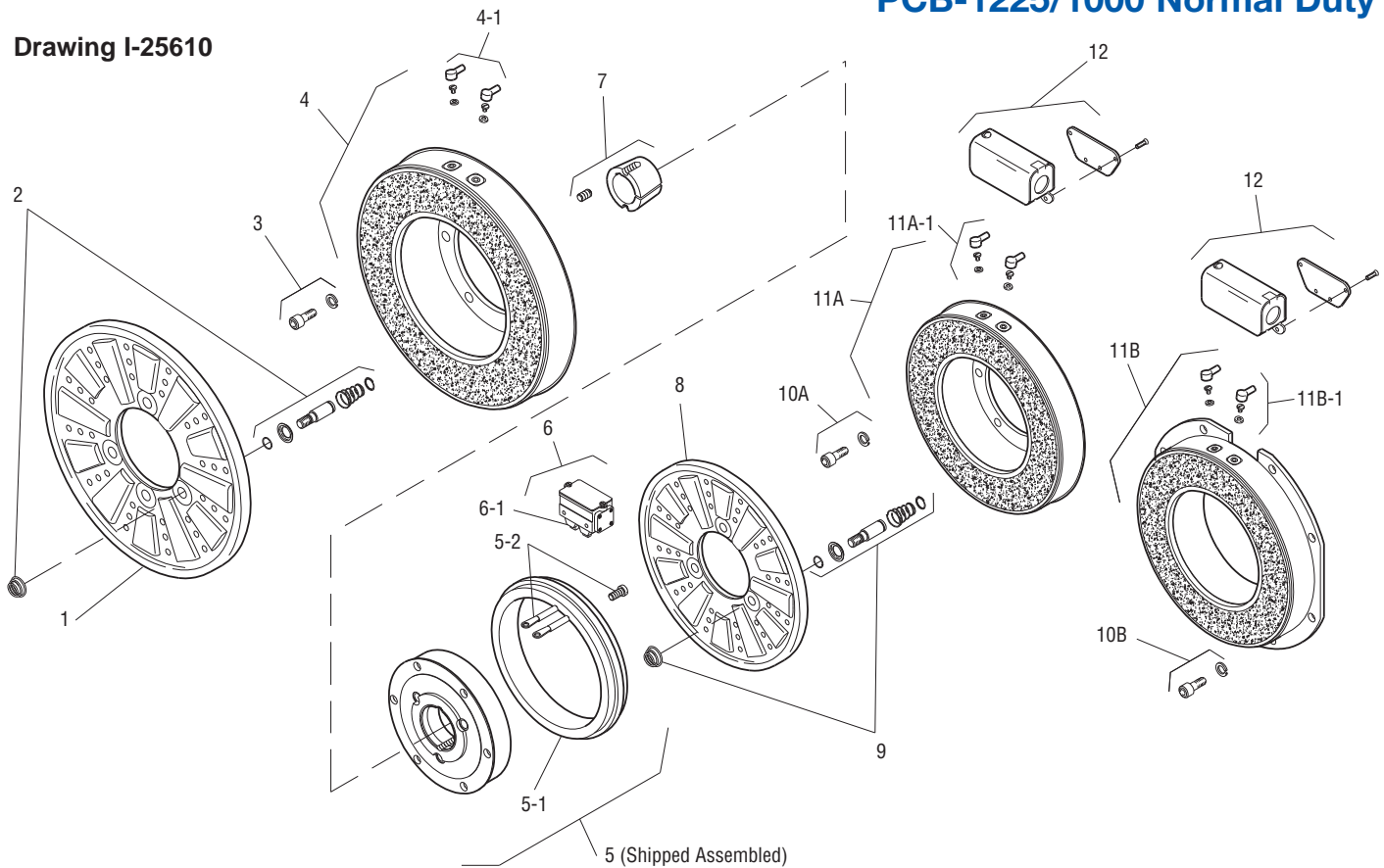
Information on inertia and weights begins on page 239. Coil data is on pages 250 and 251.

Customer Shall Maintain:

1. Concentricity of brake mounting pilot diameter with mounting shaft within .010 T.I.R.
2. Squareness of brake magnet mounting face with mounting shaft within .006 T.I.R. measured at magnet mounting bolt circle.



Drawing I-25610



| Item | Description | Part Number | Qty. |
|------|---------------------------|----------------------|------|
| 1 | Armature | 5303-111-009 | 1 |
| 2 | Autogap Accessory | 5201-101-008 | 4 |
| 3 | Mounting Accessory | 5321-101-001 | 1 |
| 4 | Magnet | | 1 |
| | 6 Volt | 5333-631-008 | |
| | 90 Volt | 5333-631-009 | |
| | †90 Volt LK Facing | 5333-631-013 | |
| 4-1 | Terminal Accessory | 5311-101-001 | 1 |
| 5 | Magnet Hub | | 1 |
| | Left Hand (shown) | 5302-541-004 | |
| | Right Hand | 5302-541-005 | |
| 5-1 | Collector Ring | 5301-749-001 | 1 |
| 5-2 | Collector Ring Accessory | 5303-101-004 | 1 |
| 6 | Brushholder | 5300-178-001 | 1 |
| 6-1 | Brush | 176-0001 | 4 |
| 7 | Bushing* | | 1 |
| | 1/2" to 2-1/2" Bore | 180-0185 to 180-0217 | |
| 8 | Armature | 5302-111-013 | 1 |
| 9 | Autogap Accessory | 5201-101-008 | 3 |
| 10A | Mounting Accessory - I.M. | 5321-101-001 | 1 |
| 10B | Mounting Accessory - O.M. | 5321-101-002 | 2 |
| 11A | Magnet - Inside Mounted | | 1 |
| | 6 Volt | 5312-631-004 | |
| | 24 Volt | 5312-631-005 | |
| | 90 Volt | 5312-631-006 | |

| Item | Description | Part Number | Qty. |
|-------|--------------------------|--------------|------|
| 11A-1 | Terminal Accessory | 5311-101-001 | 1 |
| 11B | Magnet - Outside Mounted | | 1 |
| | 6 Volt | 5312-631-011 | |
| | 24 Volt | 5312-631-013 | |
| | 90 Volt | 5312-631-012 | |
| 11B-1 | Terminal Accessory | 5311-101-001 | 1 |
| 12 | Conduit Box | 5200-101-011 | 1 |

How to Order:

1. Specify Voltage for Item 4 and Item 11A or 11B.
2. Specify left hand or right hand hub for Item 5. Bushing enters from magnet side for L.H. hub and from hub side for R.H.
3. Specify Bore Size for Item 7.
4. Specify Inside Mounted for Items 10A and 11A or Outside Mounted for Items 10B and 11B.
5. See Controls Section.

Example:

PCB-1225/1000 Clutch Brake per I-25610 - 90 Volt, Left Hand hub, 1-1/2" Bore, Inside Mounted

These units meet the standards of UL508 and are listed under guide card #NMTR2, file #59164. These units are CSA certified under file #LR11543.

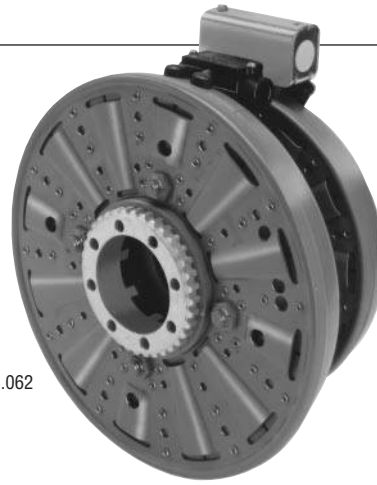
*See page 252 for specific part numbers.

Refer to Service Manual P-214.

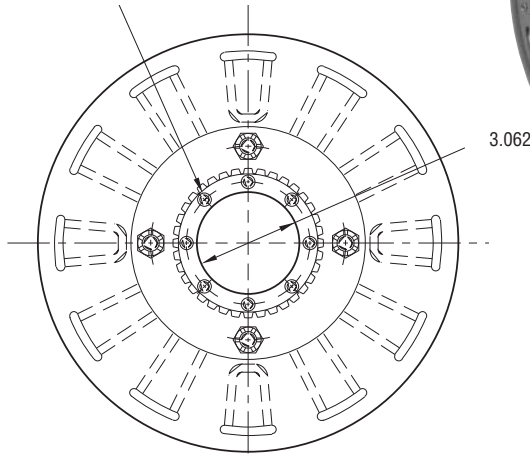
†Optional LK facing available. For more information, see page 232.

Clutch/Brake

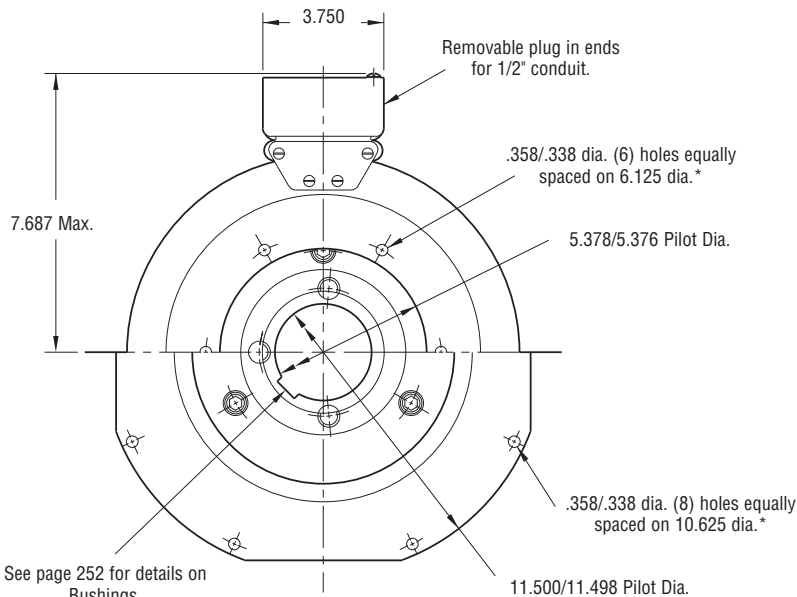
PCB-1225/1000 Heavy Duty



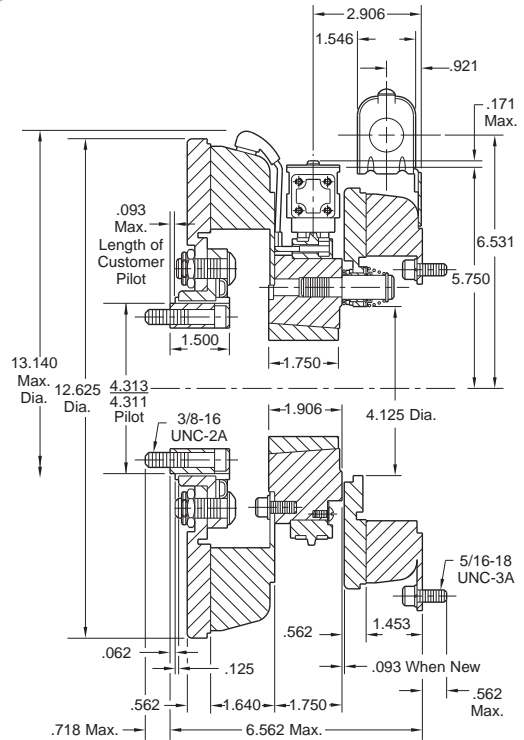
.397/.388 dia. (8) holes (hub) equally spaced on (3.625) dia. and within .003 of true position in relation to 4.313/4.311 pilot dia.



ARMATURE VIEW



MAGNET VIEW



* Mounting holes are within .010 of true position relative to pilot diameter.

| | |
|----------------------|----------------|
| Shaft Size | .500 – 2.500 |
| Static Torque Clutch | 465 lb. ft. |
| Static Torque Brake | 240 lb. ft. |
| Maximum Speed | 3,000 rpm |
| Standard Voltage | D.C. 6, 24, 90 |

All dimensions are nominal unless otherwise noted.

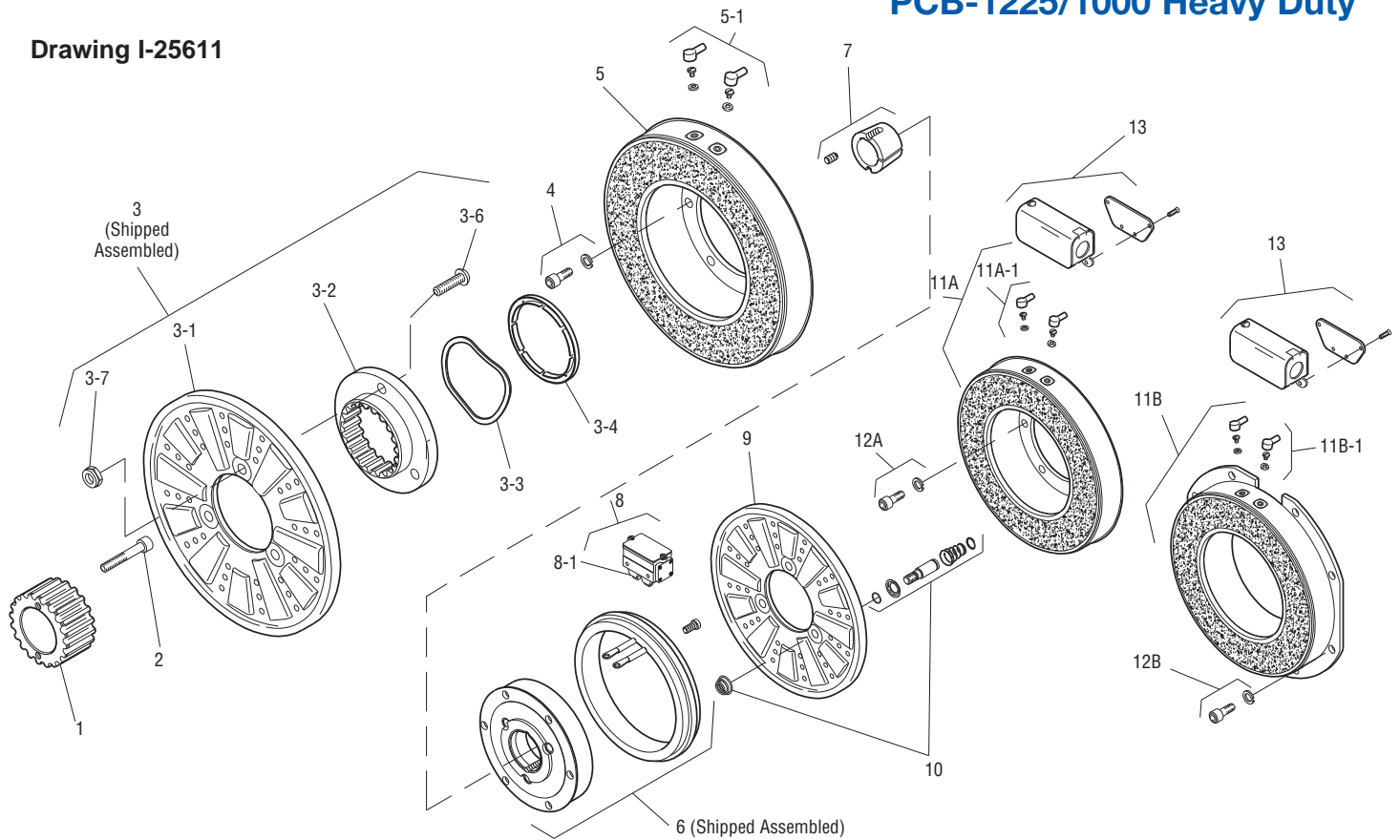
Information on inertia and weights begins on page 239. Coil data is on pages 250 and 251.

Customer Shall Maintain:

1. Concentricity of brake magnet mounting pilot diameter to mounting shaft within .010 T.I.R.
2. Squareness of brake magnet mounting face to magnet mounting shaft within .006 T.I.R.
3. Splined hub pilot diameter to be concentric with splined armature center of rotation within .010 T.I.R.



Drawing I-25611



| Item | Description | Part Number | Qty. |
|-------|--------------------------|----------------------|------|
| 1 | Splined Hub | 540-0148 | 1 |
| 2 | Mounting Accessory | 5202-101-001 | 1 |
| 3 | Armature Assembly | 5323-111-001 | 1 |
| 3-1 | Armature | 5323-111-034 | 1 |
| 3-2 | Splined Armature Adapter | 104-0010 | 1 |
| 3-3 | Autogap Spring | 808-0044 | 1 |
| 3-4 | Retainer Ring | 748-0370 | 1 |
| 3-6 | Buttonhead Screw | 797-0281 | 4 |
| 3-7 | Locknut | 661-0005 | 4 |
| 4 | Mounting Accessory | 5321-101-001 | 1 |
| 5 | Magnet Assembly | | 1 |
| | 6 Volt | 5333-631-008 | |
| | 90 Volt | 5333-631-009 | |
| | †90 Volt LK Facing | 5333-631-013 | |
| 5-1 | Terminal Accessory | 5311-101-001 | 1 |
| 6 | Hub Assembly | | |
| | Left Hand (shown) | 5302-541-004 | 1 |
| | Right Hand | 5302-541-005 | 1 |
| 7 | Bushing* | 180-0185 to 180-0217 | 1 |
| 8 | Brushholder | 5300-178-001 | 1 |
| 8-1 | Brush | 176-0001 | 4 |
| 9 | Armature Assembly | 5302-111-013 | 1 |
| 10 | Autogap Accessory | 5201-101-008 | 3 |
| 11A | Magnet I.M. | | 1 |
| | 6 Volt | 5312-631-004 | |
| | 24 Volt | 5312-631-005 | |
| | 90 Volt | 5312-631-006 | |
| 11A-1 | Terminal Accessory | 5311-101-001 | 1 |

| Item | Description | Part Number | Qty. |
|-------|--------------------------|--------------|------|
| 11B | Magnet - Outside Mounted | | 1 |
| | 6 Volt | 5312-631-011 | |
| | 24 Volt | 5312-631-013 | |
| | 90 Volt | 5312-631-012 | |
| 11B-1 | Terminal Accessory | 5311-101-001 | 1 |
| 12A | Mounting Accessory I.M. | 5321-101-001 | 1 |
| 12B | Mounting Accessory O.M. | 5321-101-002 | 2 |
| 13 | Conduit Box | 5200-101-011 | 1 |

How to Order:

1. Specify Voltage for Item 5 and Item 11A or 11B.
2. Specify left hand or right hand hub for Item 6. Bushing enters from magnet side for L.H. hub and from hub side for R.H.
3. Specify Bore Size for Item 7.
4. Specify Inside Mounted for Items 11A and 12A or Outside Mounted for Items 11B and 12B.
5. See Controls Section.

Example:

PCB-1225/1000 Clutch Brake per I-25611- 90 Volt, Left Hand hub, 1-1/2" Bore, Inside Mounted

These units meet the standards of UL508 and are listed under guide card #NMTRs, file #59164. These units are CSA certified under file #LR11543.

*See page 252 for specific part numbers.

Refer to Service Manual P-214.

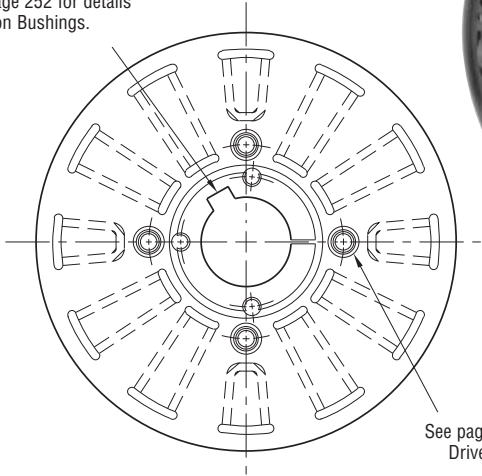
†Optional LK facing available. For more information, see page 232.

Clutch/Brake

PCB-1225 Normal Duty

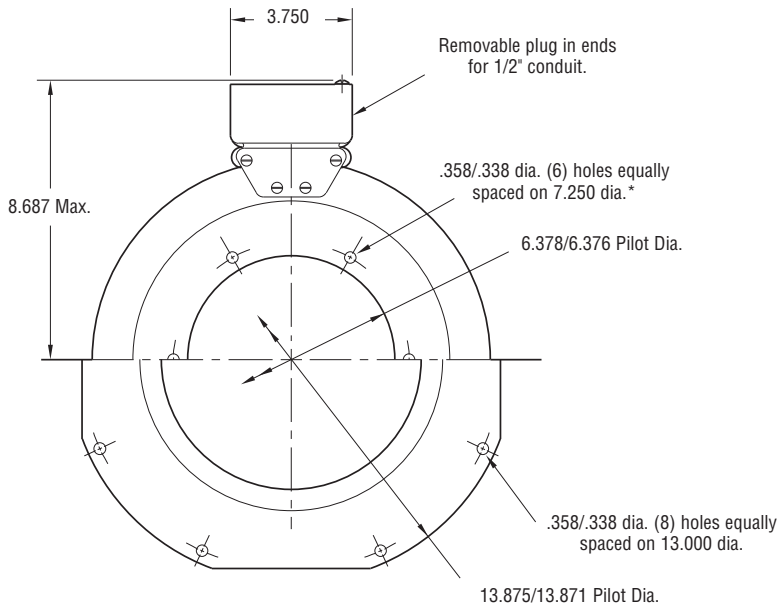


See page 252 for details on Bushings.

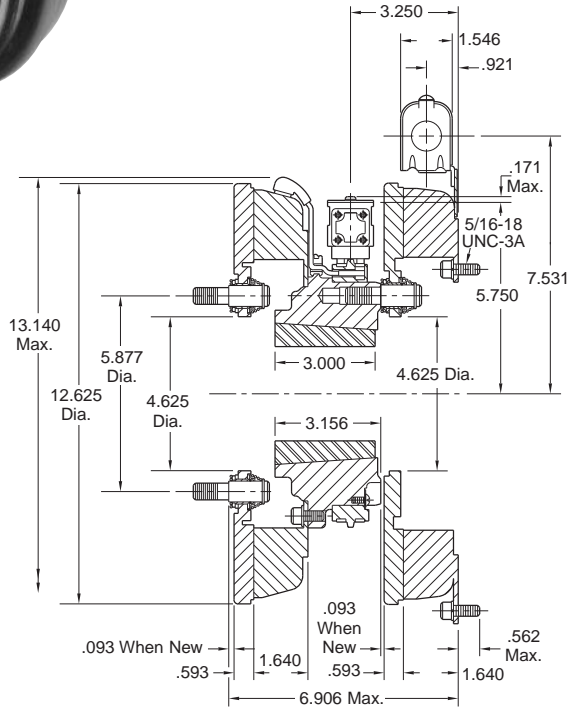


ARMATURE VIEW

See page 230 for details on Drive Pin mountings.



MAGNET VIEW
(Inside & Outside Mounted)



* Mounting holes are within .010 of true position relative to pilot diameter.

| | |
|------------------|----------------|
| Shaft Size | .937 – 3.000 |
| Static Torque | 465 lb. ft. |
| Maximum Speed | 3,000 rpm |
| Standard Voltage | D.C. 6, 24, 90 |

All dimensions are nominal unless otherwise noted.

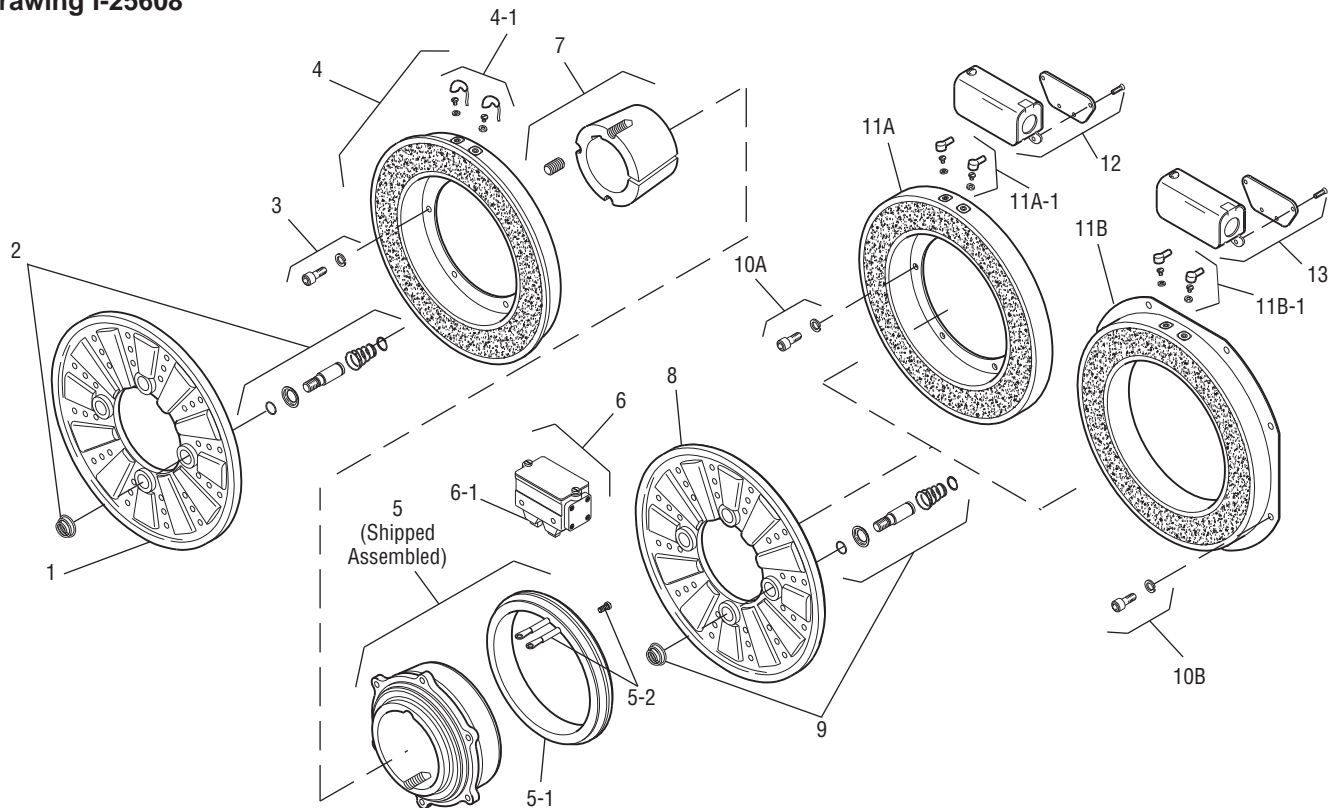
Information on inertia and weights begins on page 239. Coil data is on pages 250 and 251.

Customer Shall Maintain:

1. Concentricity of brake mounting pilot diameter with mounting shaft within .010 T.I.R.
2. Squareness of brake magnet mounting face with mounting shaft within .006 T.I.R measured at magnet mounting bolt circle.



Drawing I-25608



| Item | Description | Part Number | Qty. |
|------|---------------------------|----------------------|------|
| 1 | Armature | 5303-111-009 | 1 |
| 2 | Autogap Accessory | 5201-101-008 | 4 |
| 3 | Mounting Accessory | 5321-101-001 | 1 |
| 4 | Magnet | | 1 |
| | 6 Volt | 5303-631-005 | |
| | 24 Volt | 5303-631-007 | |
| | 90 Volt | 5303-631-008 | |
| 4-1 | Terminal Accessory | 5311-101-001 | 1 |
| 5 | Magnet Hub | | 1 |
| | Left Hand (shown) | 5303-541-001 | |
| | Right Hand | 5303-541-002 | |
| 5-1 | Collector Ring | 5301-749-001 | 1 |
| 5-2 | Collector Ring Assembly | 5303-101-004 | 1 |
| 6 | Brushholder | 5300-178-001 | 1 |
| 6-1 | Brush | 176-0001 | 4 |
| 7 | Bushing* | | 1 |
| | 15/16" to 3" Bore | 180-0262 to 180-0295 | |
| 8 | Armature | 5303-111-009 | 1 |
| 9 | Autogap Accessory | 5201-101-008 | 4 |
| 10A | Mounting Accessory - I.M. | 5321-101-001 | 1 |
| 10B | Mounting Accessory - O.M. | 5321-101-002 | 2 |
| 11A | Magnet - Inside Mounted | | 1 |
| | 6 Volt | 5313-631-005 | |
| | 24 Volt | 5313-631-006 | |
| | 90 Volt | 5313-631-007 | |

| Item | Description | Part Number | Qty. |
|-------|--------------------------|--------------|------|
| 11A-1 | Terminal Accessory | 5311-101-001 | 1 |
| 11B | Magnet - Outside Mounted | | 1 |
| | 6 Volt | 5313-631-010 | |
| | 24 Volt | 5313-631-012 | |
| | 90 Volt | 5313-631-011 | |
| 11B-1 | Terminal Accessory | 5311-101-001 | 1 |
| 12 | Conduit Box | 5200-101-011 | 2 |

How to Order:

1. Specify Voltage for Item 4 and Item 11A or 11B.
2. Specify left hand or right hand hub for Item 5. Bushing enters from magnet side for L.H. hub and from hub side for R.H.
3. Specify Bore Size for Item 7.
4. Specify Inside Mounted for Items 10A and 11A or Outside Mounted for Items 10B and 11B.
5. See Controls Section.

Example:

PCB-1225 Clutch Brake per I-25608 - 90 Volt, Left hand hub, 2" Bore, Inside Mounted.

These units meet the standards of UL508 and are listed under guide card #NMTR2, file #59164. These units are CSA certified under file #LR11543.

*See page 252 for specific part numbers.

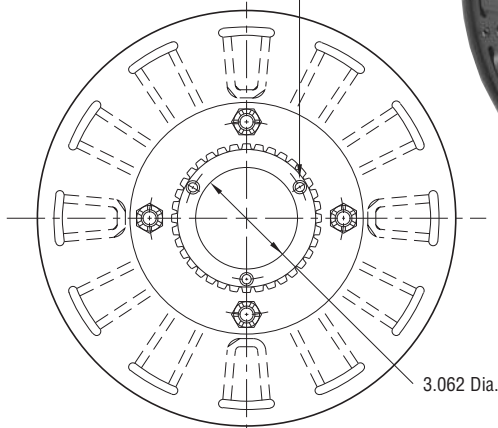
Refer to Service Manual P-205.

Clutch/Brake

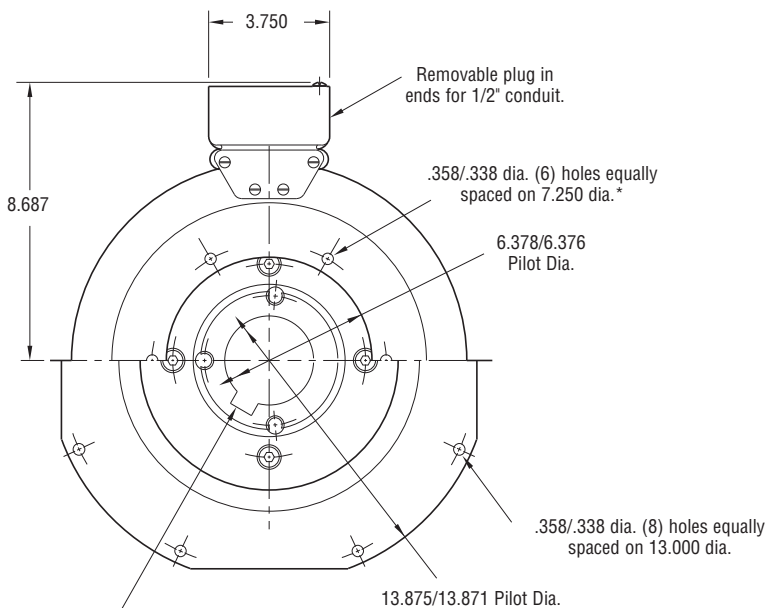
PCB-1225 Heavy Duty



(.397/.388) dia. (8) holes (hub) equally spaced on (3.625) dia. and within .003 of true position in relation to (4.313/4.311) pilot dia.

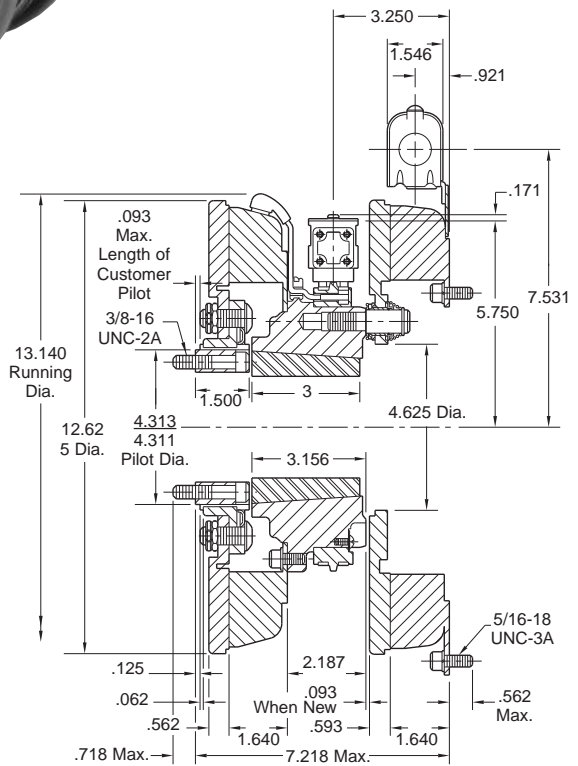


ARMATURE VIEW



See page 252 for details on Bushings.

MAGNET VIEW
(Inside & Outside Mounted)



* Mounting holes are within .010 of true position relative to pilot diameter.

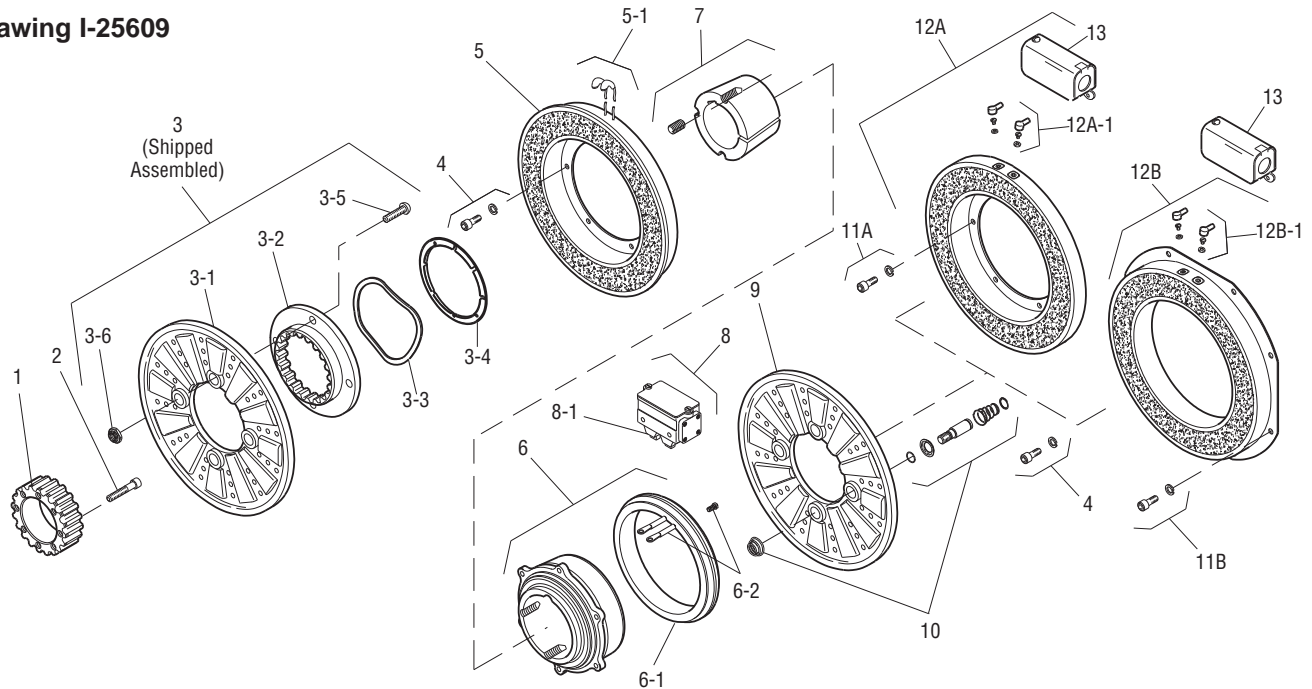
| | |
|------------------|----------------|
| Shaft Size | .937 – 3.000 |
| Static Torque | 465 lb. ft. |
| Maximum Speed | 3,000 rpm |
| Standard Voltage | D.C. 6, 24, 90 |

All dimensions are nominal unless otherwise noted.

Information on inertia and weights begins on page 239. Coil data is on pages 250 and 251.



Drawing I-25609



| Item | Description | Part Number | Qty. |
|------|--------------------------|----------------------|------|
| 1 | Splined Hub | 540-0148 | 1 |
| 2 | Mounting Accessory | 5202-101-001 | 1 |
| 3 | Armature Assembly | 5323-111-001 | 1 |
| 3-1 | Armature | 5323-111-034 | 1 |
| 3-2 | Armature Adapter | 104-0010 | 1 |
| 3-3 | Autogap Spring | 808-0044 | 1 |
| 3-4 | Retainer Ring | 748-0370 | 1 |
| 3-5 | Buttonhead Screw | 797-0281 | 3 |
| 3-6 | Locknut | 661-0005 | 3 |
| 4 | Mounting Accessory | 5321-101-001 | 1 |
| 5 | Magnet | | 1 |
| | 6 Volt | 5303-631-005 | |
| | 24 Volt | 5303-631-007 | |
| | 90 Volt | 5303-631-008 | |
| 5-1 | Terminal Accessory | 5311-101-001 | 1 |
| 6 | Magnet Hub | | 1 |
| | Right Hand | 5303-541-002 | |
| | Left Hand (shown) | 5303-541-001 | |
| 6-1 | Collector Ring | 5301-749-001 | 1 |
| 6-2 | Collector Ring Accessory | 5303-101-004 | 1 |
| 7 | Bushing* | 180-0262 to 180-0295 | 1 |
| 8 | Brushholder | 5300-178-001 | 1 |
| 8-1 | Brush | 176-0001 | 4 |
| 9 | Armature | 5303-111-009 | 1 |
| 10 | Autogap Accessory | 5201-101-008 | 4 |
| 11A | Mounting Accessory | | |
| | Inside Mounted | 5321-101-001 | 1 |
| 11B | Mounting Accessory | | |
| | Outside Mounted | 5321-101-002 | 2 |

| Item | Description | Part Number | Qty. |
|-------|--------------------------|--------------|------|
| 12A | Magnet - Inside Mounted | | 1 |
| | 6 Volt | 5313-631-005 | |
| | 24 Volt | 5313-631-006 | |
| | 90 Volt | 5313-631-007 | |
| 12A-1 | Terminal Accessory | 5311-101-001 | 1 |
| 12B | Magnet - Outside Mounted | | 1 |
| | 6 Volt | 5313-631-010 | |
| | 24 Volt | 5313-631-012 | |
| | 90 Volt | 5313-631-011 | |
| 12B-1 | Terminal Accessory | 5311-101-001 | 1 |
| 13 | Conduit Box | 5200-101-010 | 1 |

How to Order:

1. Specify Voltage for Item 5 and Item 12A or 12B.
2. Specify left hand or right hand hub for Item 6. Bushing enters from magnet side for L.H. hub and from hub side for R.H.
3. Specify Bore Size for Item 7.
4. Specify Inside Mounted for Items 11A and 12A or Outside Mounted for Items 11B and 12B.
5. See Controls Section.

Example:

PCB-1225 Clutch Brake per I-25609 - 90 Volt, Left Hand hub, 2" Bore, Inside Mounted

These units meet the standards of UL508 and are listed under guide card #NMTR2, file #59164. These units are CSA certified under file #LR11543.

*See page 252 for specific part numbers.

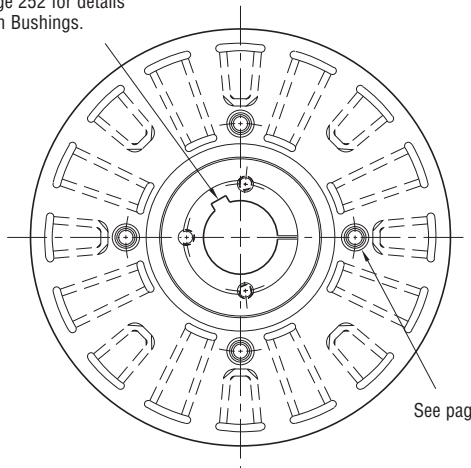
Refer to Service Manual P-205.

Clutch/Brake

PCB-1525/1225 Normal Duty

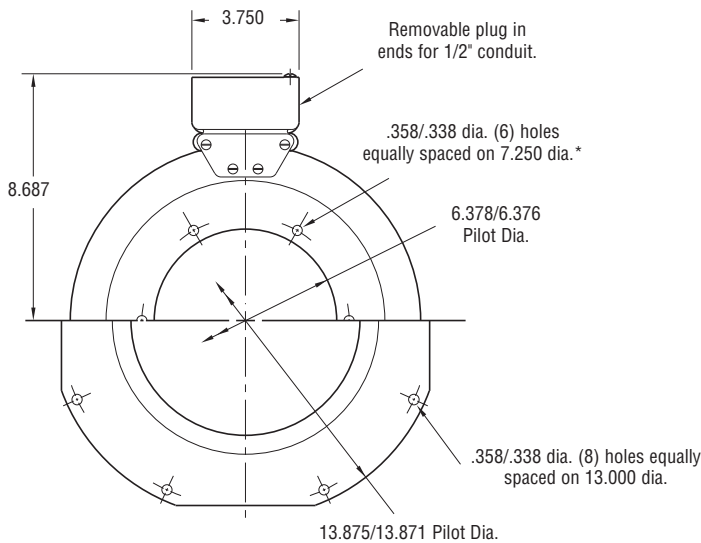


See page 252 for details on Bushings.

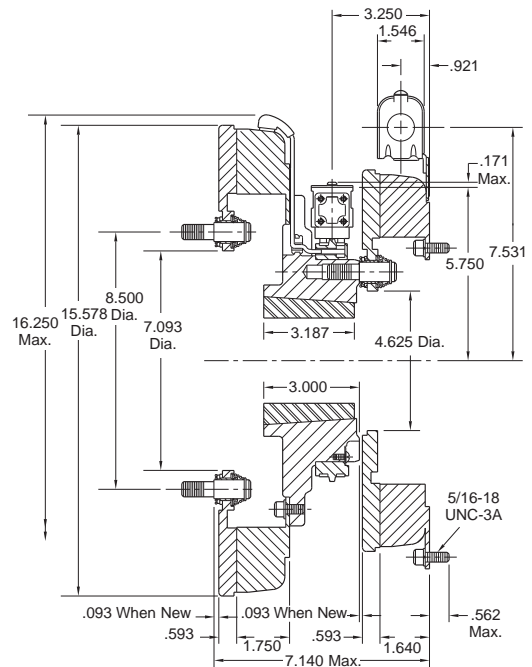


See page 230 for details on Drive Pin mountings.

ARMATURE VIEW



MAGNET VIEW (Inside & Outside Mounted)



* Mounting holes are within .010 of true position relative to pilot diameter.

Customer Shall Maintain:

1. Concentricity of brake mounting pilot diameter with mounting shaft within .010 T.I.R.
2. Squareness of brake magnet mounting face with mounting shaft within .006 T.I.R. measured at magnet mounting bolt circle.

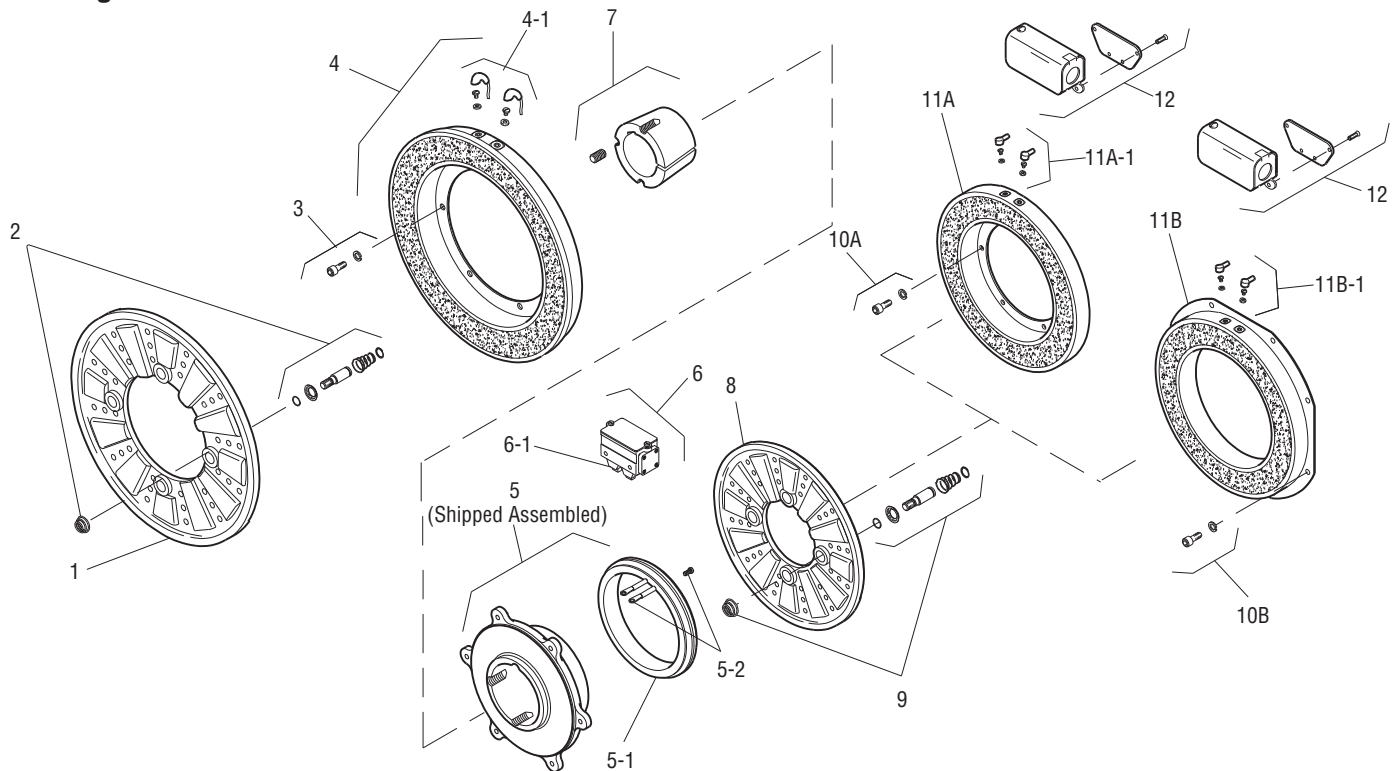
| | |
|----------------------|----------------|
| Shaft Size | .937 – 3.000 |
| Static Torque Clutch | 700 lb. ft. |
| Static Torque Brake | 465 lb. ft. |
| Maximum Speed | 2,000 rpm |
| Standard Voltage | D.C. 6, 24, 90 |

All dimensions are nominal unless otherwise noted.

Information on inertia and weights begins on page 239. Coil data is on pages 250 and 251.



Drawing I-25635



| Item | Description | Part Number | Qty. |
|------|---------------------------|----------------------|------|
| 1 | Armature | 5304-111-004 | 1 |
| 2 | Autogap Accessory | 5201-101-008 | 4 |
| 3 | Mounting Accessory | 5321-101-001 | 1 |
| 4 | Magnet | | 1 |
| | 6 Volt | 5304-631-009 | |
| | 24 Volt | 5304-631-011 | |
| | 90 Volt | 5304-631-010 | |
| 4-1 | Terminal Accessory | 5311-101-001 | 1 |
| 5 | Magnet Hub | | 1 |
| | Left Hand (shown) | 5304-541-001 | |
| | Right Hand | 5304-541-002 | |
| 5-1 | Collector Ring | 5301-749-001 | 1 |
| 5-2 | Collector Ring Accessory | 5304-101-004 | 1 |
| 6 | Brushholder | 5300-178-001 | 1 |
| 6-1 | Brush | 176-0001 | 4 |
| 7 | Bushing* | | 1 |
| | 15/16" to 3" Bore | 180-0262 to 180-0295 | |
| 8 | Armature | 5303-111-009 | 1 |
| 9 | Autogap Accessory | 5201-101-008 | 4 |
| 10A | Mounting Assembly - I.M. | 5321-101-001 | 1 |
| 10B | Mounting Accessory - O.M. | 5321-101-002 | 2 |
| 11A | Magnet - Inside Mounted | | 1 |
| | 6 Volt | 5313-631-005 | |
| | 24 Volt | 5313-631-006 | |
| | 90 Volt | 5313-631-007 | |

| Item | Description | Part Number | Qty. |
|-------|--------------------------|--------------|------|
| 11A-1 | Terminal Accessory | 5311-101-001 | 1 |
| 11B | Magnet - Outside Mounted | | 1 |
| | 6 Volt | 5313-631-010 | |
| | 24 Volt | 5313-631-012 | |
| | 90 Volt | 5313-631-011 | |
| 11B-1 | Terminal Accessory | 5311-101-001 | 1 |
| 12 | Conduit Box | 5200-101-010 | 1 |

How to Order:

1. Specify Voltage for Item 4 and Item 11A or 11B.
2. Specify left hand or right hand hub for Item 5. Bushing enters from magnet side for L.H. hub and from hub side for R.H.
3. Specify Bore Size for Item 7.
4. Specify Inside Mounted for Items 10A and 11A or Outside Mounted for Items 10B and 11B.
5. See Controls Section.

Example:

PCB-1525/1225 Clutch Brake per I-25635 - 90 Volt, Left Hand hub, 2" Bore, Inside Mounted

These units meet the standards of UL508 and are listed under guide card #NMTR2, file #59164. These units are CSA certified under file #LR11543.

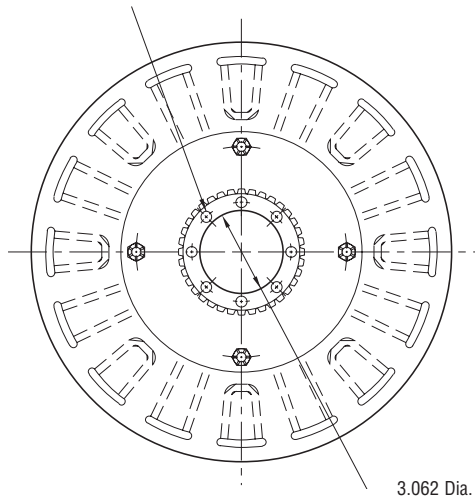
*See page 252 for specific part numbers.

Refer to Service Manual P-214.

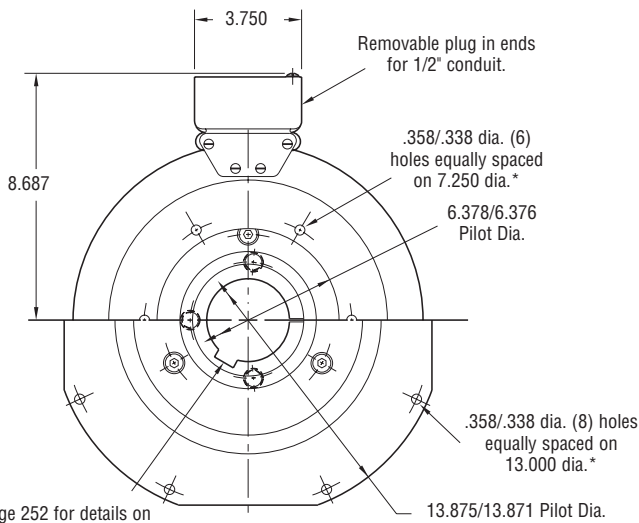
Clutch/Brake

PCB-1525/1225 Heavy Duty

(.397/.388) dia. (8) holes (hub) equally spaced on (3.625) dia. and within .003 of true position relative to (4.313/4.311) pilot diameter.

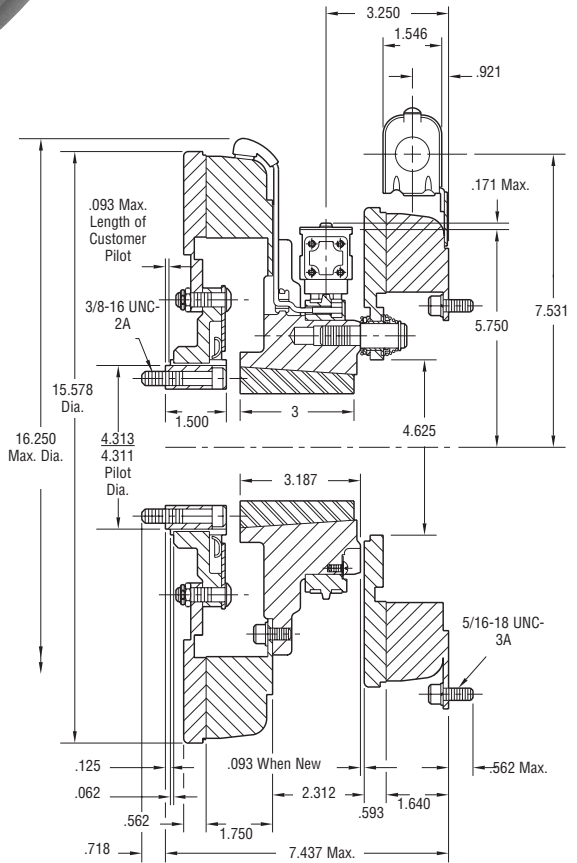


ARMATURE VIEW



MAGNET VIEW

See page 252 for details on Bushings.



* Mounting holes are within .010 of true position relative to pilot diameter.

Customer Shall Maintain:

1. Concentricity of brake magnet mounting pilot diameter to mounting shaft within .010 T.I.R.
2. Squareness of brake magnet mounting face to magnet mounting shaft within .006 T.I.R.
3. Splined hub pilot diameter to be concentric with splined armature center of rotation within .010 T.I.R.

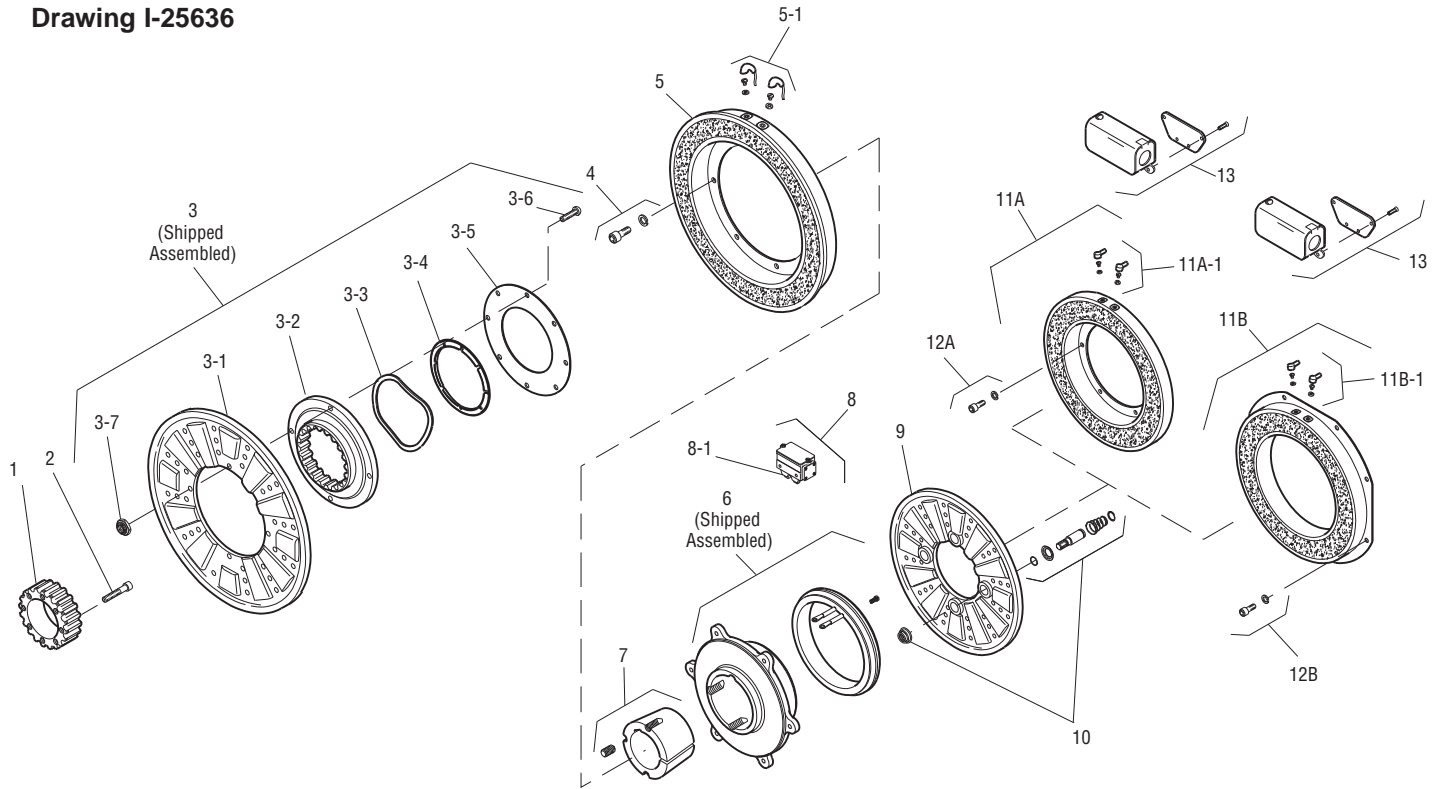
| | |
|----------------------|----------------|
| Shaft Size | .937 – 3.000 |
| Static Torque Clutch | 700 lb. ft. |
| Static Torque Brake | 465 lb. ft. |
| Maximum Speed | 2,000 rpm |
| Standard Voltage | D.C. 6, 24, 90 |

All dimensions are nominal unless otherwise noted.

Information on inertia and weights begins on page 239. Coil data is on pages 250 and 251.



Drawing I-25636



| Item | Description | Part Number | Qty. |
|------|--------------------------|----------------------|------|
| 1 | Splined Hub | 540-0148 | 1 |
| 2 | Mounting Accessory | 5202-101-001 | 1 |
| 3 | Armature Assembly | 5324-111-001 | 1 |
| 3-1 | Armature | 5324-111-034 | 1 |
| 3-2 | Splined Armature Adapter | 104-0011 | 1 |
| 3-3 | Autogap Spring | 808-0044 | 1 |
| 3-4 | Retainer Ring | 748-0370 | 1 |
| 3-5 | Retainer Plate | 686-0003 | 1 |
| 3-6 | Buttonhead Screw | 797-0272 | 8 |
| 3-7 | Locknut | 661-0004 | 8 |
| 4 | Mounting Accessory | 5321-101-001 | 1 |
| 5 | Magnet Assembly | | |
| | 6 Volt | 5304-631-009 | |
| | 24 Volt | 5304-631-011 | |
| | 90 Volt | 5304-631-010 | |
| 5-1 | Terminal Accessory | 5311-101-001 | 1 |
| 6 | Hub Assembly | | |
| | Left Hand (shown) | 5304-541-001 | |
| | Right Hand | 5304-541-002 | |
| 7 | Bushing* | 180-0262 to 180-0295 | 1 |
| 8 | Brushholder | 5300-178-001 | 1 |
| 8-1 | Brush | 176-0001 | 4 |
| 9 | Armature Assembly | 5303-111-009 | 1 |
| 10 | Autogap Accessory | 5201-101-008 | 4 |
| 11A | Magnet - Inside Mounted | | 1 |
| | 6 Volt | 5313-631-005 | |
| | 24 Volt | 5313-631-006 | |
| | 90 Volt | 5313-631-007 | |

| Item | Description | Part Number | Qty. |
|-------|--------------------------|--------------|------|
| 11A-1 | Terminal Accessory | 5311-101-001 | 1 |
| 11B | Magnet - Outside Mounted | | 1 |
| | 6 Volt | 5313-631-010 | |
| | 24 Volt | 5313-631-012 | |
| | 90 Volt | 5313-631-011 | |
| 11B-1 | Terminal Accessory | 5311-101-001 | 1 |
| 12A | Mounting Accessory I.M. | 5321-101-001 | 1 |
| 12B | Mounting Accessory O.M. | 5321-101-002 | 2 |
| 13 | Conduit Box | 5200-101-011 | 1 |

How to Order:

1. Specify Voltage for Item 5 and Item 11A or 11B.
2. Specify left hand or right hand hub for Item 6. Bushing enters from magnet side for L.H. hub and from hub side for R.H.
3. Specify Bore Size for Item 7.
4. Specify Inside Mounted for Items 11A and 12A or Outside Mounted for Items 11B and 12B.
5. See Controls Section.

Example:

PCB-1525/1225 Clutch Brake per I-25636 - 90 Volt, Left Hand hub, 2" Bore, Inside Mounted

These units meet standards set forth in UL508 and are listed under guide card #NMTR2, file #59164.

These units are CSA certified under file #LR11543.

*See page 252 for specific part numbers.

Refer to Service Manual P-214.