

Shaft Mounted Clutches

EC Series

All the features of an electric clutch in a convenient, preassembled package. Mounts on any through shaft or double shafted motor. Easy-to-assemble with standard sheaves, pulleys, gears and sprockets.

Available in a wide range of bore sizes. Shaft extension makes pulley or sprocket installation easy.

Shaft Mounted Brakes

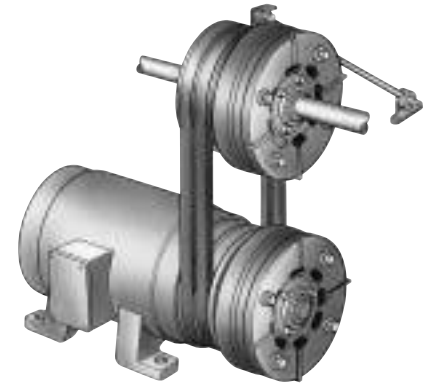
EB Series

Electro Brakes mount directly on a motor or through shaft for basic braking functions.

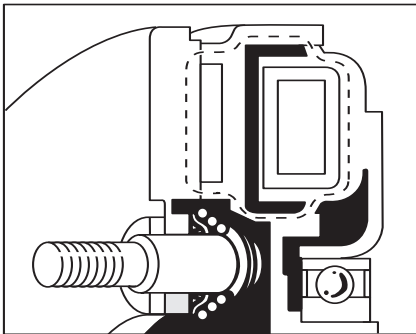
Torque arm feature makes Electro Brakes easy to install on any through shaft or double shaft motor.

Segmented and fluted armature disc provides maximum cooling of friction surfaces.

- Six sizes of clutches and brakes
- 16 lb. ft. to 465 lb. ft. torque range
- Preassembled. Factory aligned.
- Mounting flexibility
- Simple to install

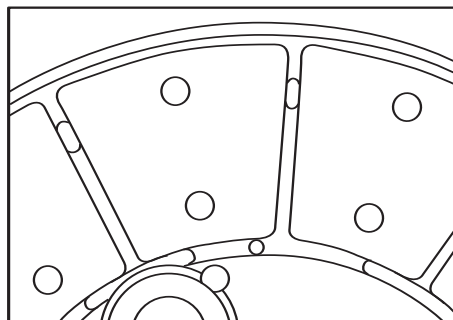


Motor mounted Electro Clutch used in combination with an Electro Brake on a through shaft installation.



Brushless Design

Warner Electric designed electromagnetic circuit eliminates brushes.



Heat Dissipation

Specially designed segmented armature disc is segmented and fluted to provide maximum cooling of friction surfaces. Automatically adjusts for wear.

Shaft Mounted Clutches



Mounting flexibility

Standard Electro Clutches are offered in a wide variety of bore sizes.

UL and CSA listed

Conduit box meets industry standards.

Simple installation

Easy-to-install a pulley, sprocket, sheave or gear on the Electro Clutch shaft extension.

Long life – no maintenance

Specially designed armature disc is segmented and fluted to provide maximum cooling of friction surfaces. Automatically adjusts to wear.

No brushes to wear out

Warner Electric designed electro-magnetic circuit eliminates brushes.

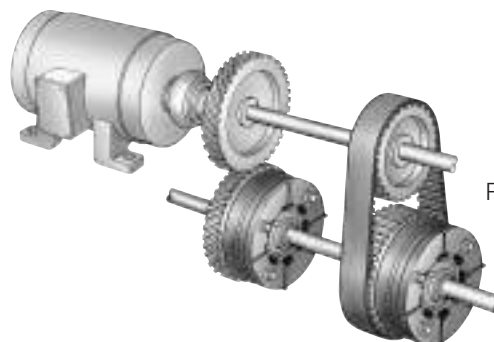
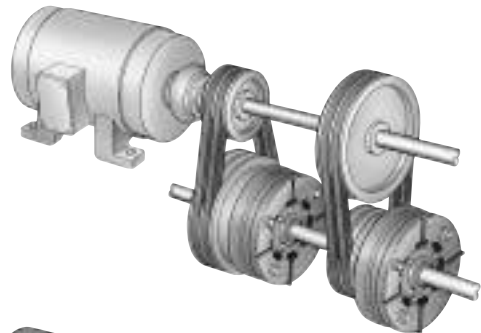
Packaged Performance

The engineering is built-in. Warner Electric Packaged Performance products are factory aligned and pre-assembled. They have been designed to mate easily with industry standard motors, reducers and other power transmission components. "Bolt-it-down and wire-it-up". . . they're ready to go.

- Hubs mate to standard sheaves, sprockets, gears and pulleys
- Wide torque range from 16 to 465 lb. ft.
- Handle 1 to 20 HP at 1800 RPM

Typical Applications

Electro Clutches used for speed changing in a two speed drive.



Reversing with Electro Clutches.

Selection Procedure

- Determine the motor horsepower and r.p.m. at the clutch location.
- Use the Horsepower vs. Shaft Speed chart to determine the right size Electro Clutch.
- When ordering, specify bore size and voltage.
- To get maximum performance from your Electro Clutch, use a Warner Electric Control. See the Controls Section.

Note:
Electro Clutches require extended length motor shafts for motor mounting.

Part Numbers

| Model Size | Bore Size | Voltage DC | Part No. |
|------------|-----------|------------|--------------|
| EC-375 | 1/2" | 6 | 5180-271-006 |
| | | 24 | 5180-271-004 |
| | | 90 | 5180-271-009 |
| EC-375 | 5/8" | 6 | 5180-271-002 |
| | | 24 | 5180-271-008 |
| | | 90 | 5180-271-005 |
| EC-475 | 5/8" | 6 | 5181-271-004 |
| | | 24 | 5181-271-008 |
| | | 90 | 5181-271-007 |
| EC-475 | 3/4" | 6 | 5181-271-003 |
| | | 24 | 5181-271-009 |
| | | 90 | 5181-271-005 |
| EC-475 | 7/8" | 6 | 5181-271-002 |
| | | 24 | 5181-271-010 |
| | | 90 | 5181-271-006 |
| EC-650 | 1" | 6 | 5281-271-004 |
| | | 24 | 5281-271-018 |
| | | 90 | 5281-271-007 |
| EC-650 | 1-1/8" | 6 | 5281-271-002 |
| | | 24 | 5281-271-019 |
| | | 90 | 5281-271-005 |
| EC-650 | 1-1/4" | 6 | 5281-271-009 |
| | | 24 | 5281-271-020 |
| | | 90 | 5281-271-008 |
| EC-650 | 1-3/8" | 6 | 5281-271-003 |
| | | 24 | 5281-271-016 |
| | | 90 | 5281-271-006 |
| EC-825 | 1-1/8" | 6 | 5282-271-002 |
| | | 24 | 5282-271-008 |
| | | 90 | 5282-271-011 |
| EC-825 | 1-1/4" | 6 | 5282-271-003 |
| | | 24 | 5282-271-009 |
| | | 90 | 5282-271-012 |
| EC-825 | 1-3/8" | 6 | 5282-271-004 |
| | | 24 | 5282-271-010 |
| | | 90 | 5282-271-013 |
| EC-1000 | 1-3/8" | 6 | 5283-271-002 |
| | | 24 | 5283-271-010 |
| | | 90 | 5283-271-003 |
| EC-1000 | 1-1/2" | 24 | 5283-271-012 |
| | | 90 | 5283-271-013 |
| | | 6 | 5283-271-004 |
| EC-1000 | 1-5/8" | 24 | 5283-271-011 |
| | | 90 | 5283-271-005 |
| | | 6 | 5284-271-008 |
| EC-1225 | 1-5/8" | 24 | 5284-271-013 |
| | | 90 | 5284-271-010 |
| | | 6 | 5284-271-002 |
| EC-1225 | 1-7/8" | 24 | 5284-271-014 |
| | | 90 | 5284-271-003 |
| | | 6 | 5284-271-004 |
| EC-1225 | 2-1/8" | 24 | 5284-271-015 |
| | | 90 | 5284-271-005 |

Note: Metric bores available in some sizes, consult factory.

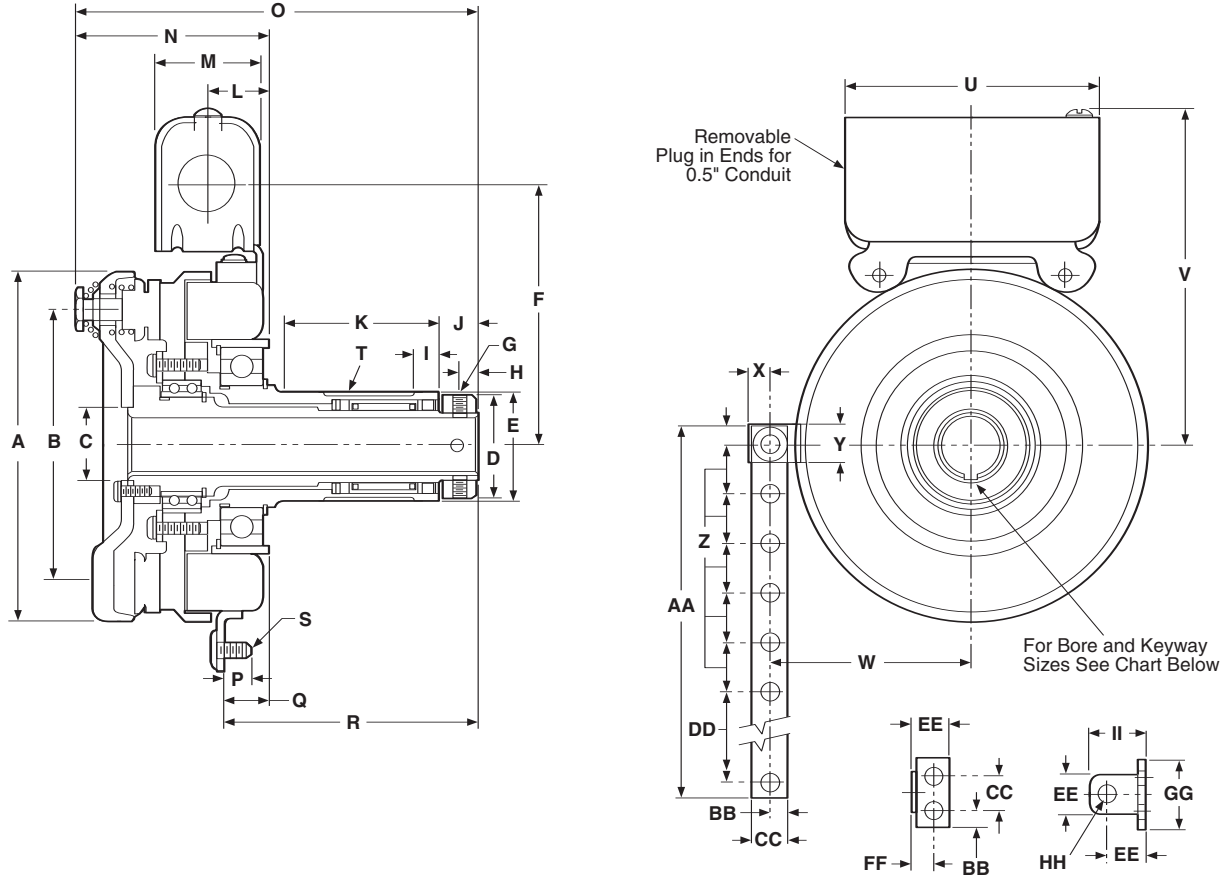
Horsepower vs. Shaft Speed

| HP | SHAFT SPEED AT CLUTCH (IN RPM) | | | | | | | | | | | | | | | | | | | | | |
|-------|--------------------------------|-----|-----|-----|-----|-----|-----|-----|-----|------|------|------|------|------|------|------|------|------|------|------|------|--|
| | 100 | 200 | 300 | 400 | 500 | 600 | 700 | 800 | 900 | 1000 | 1100 | 1200 | 1500 | 1800 | 2000 | 2400 | 3000 | 3600 | 4000 | 4500 | 5000 | |
| 1/50 | | | | | | | | | | | | | | | | | | | | | | |
| 1/20 | | | | | | | | | | | | | | | | | | | | | | |
| 1/12 | | | | | | | | | | | | | | | | | | | | | | |
| 1/8 | | | | | | | | | | | | | | | | | | | | | | |
| 1/6 | | | | | | | | | | | | | | | | | | | | | | |
| 1/4 | | | | | | | | | | | | | | | | | | | | | | |
| 1/2 | | | | | | | | | | | | | | | | | | | | | | |
| 3/4 | | | | | | | | | | | | | | | | | | | | | | |
| 1 | | | | | | | | | | | | | | | | | | | | | | |
| 1-1/2 | | | | | | | | | | | | | | | | | | | | | | |
| 2 | | | | | | | | | | | | | | | | | | | | | | |
| 3 | | | | | | | | | | | | | | | | | | | | | | |
| 5 | | | | | | | | | | | | | | | | | | | | | | |
| 7-1/2 | | | | | | | | | | | | | | | | | | | | | | |
| 10 | | | | | | | | | | | | | | | | | | | | | | |
| 15 | | | | | | | | | | | | | | | | | | | | | | |
| 20 | | | | | | | | | | | | | | | | | | | | | | |

Specifications

| Electro Clutch Size | Static Torque lb. ft. | Max. RPM | Voltage DC | Total Wt. lbs. |
|---------------------|-----------------------|----------|-------------|----------------|
| EC-375 | 16 | 5000 | 6, 24 or 90 | 4 |
| EC-475 | 30 | 4500 | 6, 24 or 90 | 8 |
| EC-650 | 95 | 3600 | 6, 24 or 90 | 18 |
| EC-825 | 125 | 3600 | 6, 24 or 90 | 28 |
| EC-1000 | 240 | 2000 | 6, 24 or 90 | 41 |
| EC-1225 | 465 | 2000 | 6, 24 or 90 | 85 |

EC-375, EC-475, EC-650



All dimensions are nominal, unless otherwise noted.

| Size | A Max. | B Dia. | C Min. | D Dia. | E Dia. | F | G | H | I | J | K Max. | L | M |
|------|--------|--------|--------|--------|--------|-------|------------|------|------|------|--------|------|-------|
| 375 | 4.078 | 3.125 | .7505 | 1.313 | 1.375 | 3.344 | 10-24 UNC | .188 | .375 | .344 | 2.047 | .781 | 1.547 |
| | | | | | 1.374 | | -3A x 5/15 | | | | | | |
| 475 | 5.172 | 4.000 | 1.0625 | 1.563 | 1.625 | 3.922 | 1/4-20 UNC | .281 | .375 | .578 | 2.359 | .875 | 1.547 |
| | | | | | 1.624 | | -3A x 7/16 | | | | | | |
| 650 | 6.578 | 5.125 | 1.625 | 2.375 | 2.5000 | 4.625 | 1/4-20 UNC | .281 | .188 | .563 | 3.047 | .953 | 1.547 |
| | | | | | 2.4985 | | -3A x 1/2 | | | | | | |

Bore Sizes and Keyways

| Size | Bore Dia. | Keyway |
|------|-----------|--------------|
| 375 | .625 | *3/16 x 1/16 |
| | .500 | 1/8 x 1/16 |
| 475 | .750 | 3/16 x 3/32 |
| | .875 | *3/16 x 1/16 |
| | .625 | 3/16 x 3/32 |
| 650 | 1.125 | *1/4 x 1/8 |
| | 1.375 | *5/16 x 3/32 |
| | 1.000 | 1/4 x 1/8 |
| | 1.250 | 1/4 x 1/8 |

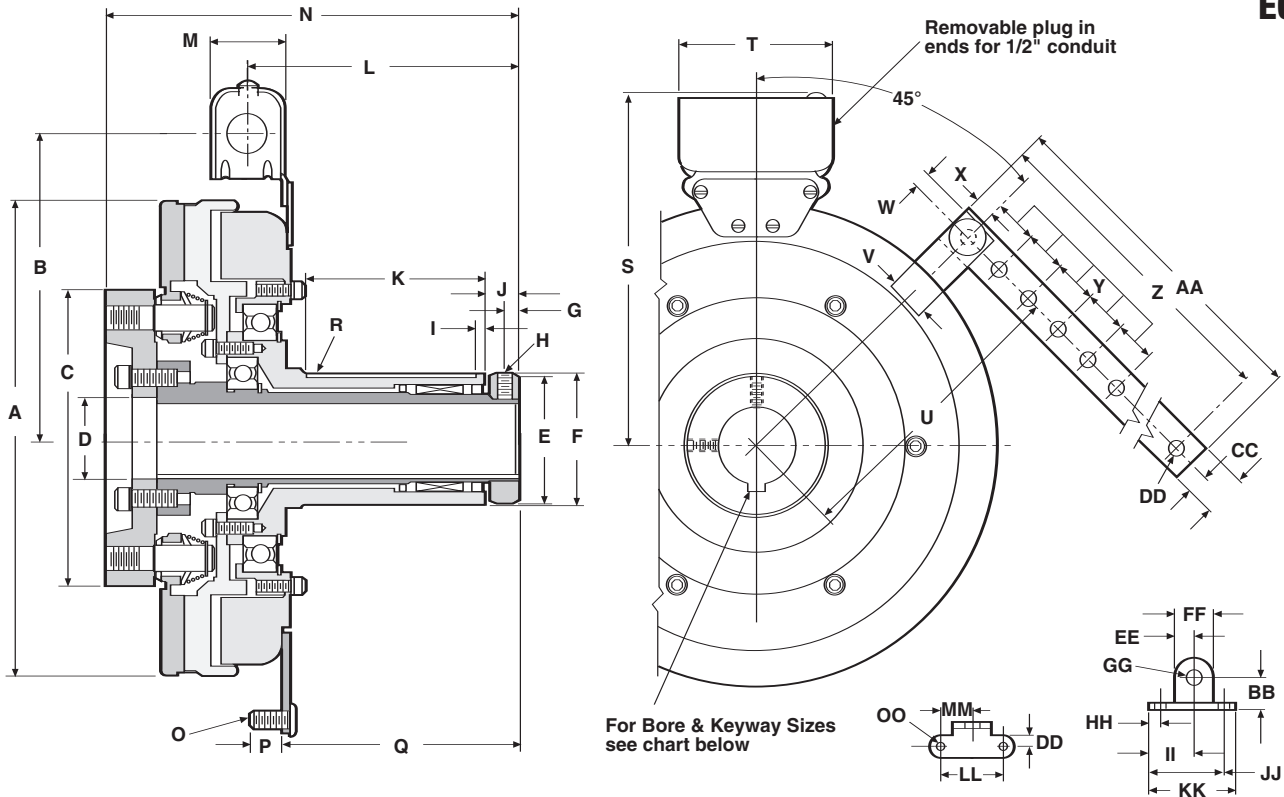
*Key Furnished

| Size | N Max. | O Max. | P | Q Max. | R Min. | S | T | U | V Max. | W | X |
|------|--------|--------|------|--------|--------|---------------|-------------|-------|--------|-------|------|
| 375 | 2.484 | 4.984 | .438 | .609 | 3.000 | 1/4-20 UNC-2A | 5/16 x 3/32 | 3.750 | 4.438 | 2.438 | .313 |
| 475 | 3.219 | 6.266 | .422 | .658 | 3.641 | 1/4-20 UNC-2A | 3/8 x 3/32 | 3.750 | 4.984 | 2.984 | .313 |
| 650 | 3.547 | 7.141 | .422 | .722 | 4.359 | 1/4-20 UNC-2A | 5/8 x 3/32 | 3.750 | 5.750 | 3.750 | .313 |

| Size | Y | Z | AA | BB | CC | DD | EE Dia. | FF | GG | HH Dia. | II |
|------|------|------|--------|------|------|-------|---------|------|-------|---------|------|
| 375 | .563 | .750 | 5.000 | .250 | .500 | .750 | .563 | .313 | 1.000 | .270 | .828 |
| | | | | | | | | | | .260 | |
| 475 | .578 | .750 | 5.000 | .250 | .500 | .750 | .563 | .313 | 1.000 | .270 | .828 |
| | | | | | | | | | | .260 | |
| 650 | .563 | .750 | 10.000 | .250 | .500 | 5.750 | .563 | .313 | 1.000 | .270 | .828 |
| | | | | | | | | | | .260 | |

Specifications

| Size | Average Wt.-lbs. | | | | Inertia-WR ² (lb.ft. ²) | | | |
|--------|------------------|-------|--------------|--------------|--|-------|--------------|--------------|
| | Arm. & Carrier. | Rotor | Outer Sleeve | Inner Sleeve | Arm. & Carrier | Rotor | Outer Sleeve | Inner Sleeve |
| EC-375 | .60 | .55 | .49 | .60 | .010 | .018 | .001 | .001 |
| EC-475 | 1.13 | 1.12 | .78 | 1.22 | .072 | .033 | .006 | .002 |
| EC-650 | 2.3 | 2.5 | 1.6 | 2.37 | .106 | .202 | .010 | .013 |



Specifications

| Model Size | Voltage DC | Inertia-WR ² (lb. ft ²) | | | Average Weight-lbs. | | |
|------------|------------|--|----------------------|-------------------|------------------------------|----------------------|--|
| | | Armature, Hub & Inner Sleeve | Rotor & Outer Sleeve | Total Weight lbs. | Armature, Hub & Inner Sleeve | Rotor & Outer Sleeve | |
| EC-825 | 6 | .35 | .87 | 28 | 6.0 | 18.5 | |
| | 24 | .35 | .87 | 28 | 6.0 | 18.5 | |
| | 90 | .35 | .87 | 28 | 6.0 | 18.5 | |

All dimensions are nominal, unless otherwise noted.

| Size | A Max. | B Dia. | C | D Min. | E Dia. | F Dia. | G | H | I | J |
|------|--------|--------|-------|--------|--------|------------------|------|-------------------------|------|------|
| 825 | 8.656 | 5.656 | 4.625 | 1.437 | 2.375 | 2.5000 2.4985 | .281 | 1/4-20 UNC -3A x 3/8 | .188 | .563 |

| Size | K Max. | L | M | N Max. | O | P | Q Max. | R* | S | T |
|------|--------|-------|-------|--------|----------------|-------|--------|------------|-------|-------|
| 825 | 3.047 | 5.219 | 1.547 | 8.000 | 5/16-18 UNC-2A | 1.547 | 4.468 | 5/8 x 3/32 | 6.813 | 3.750 |

| Size | U | V | W | X | Y | Z | AA | BB | CC | DD Dia. |
|------|-------|------|---|------|------|--------|----|------|------|--------------|
| 825 | 5.063 | .875 | — | .375 | .750 | 16.625 | 17 | .750 | .375 | .330 .321 |

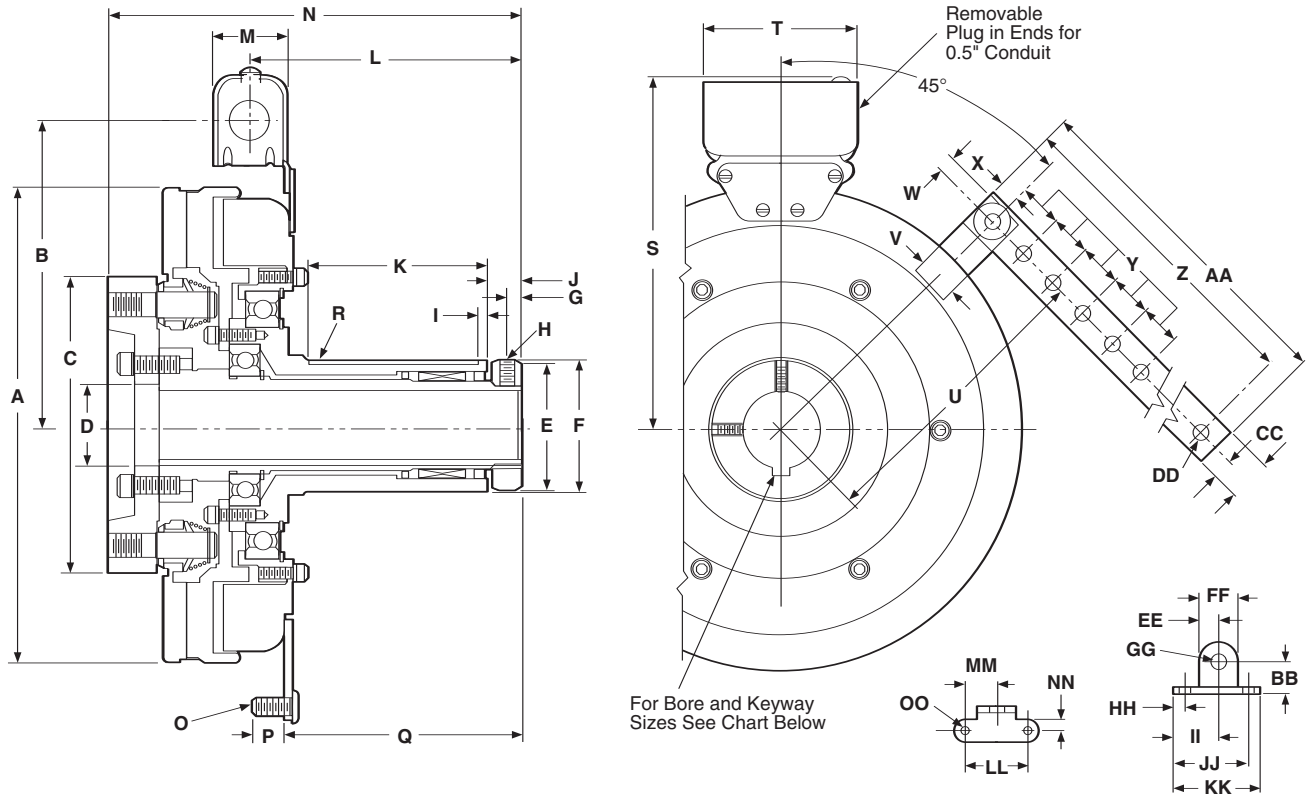
| Size | EE | FF | GG Dia. | HH | II | JJ | KK | LL | MM | NN | OO |
|------|------|------|---------|------|-------|-------|-------|-------|------|------|--------------|
| 825 | .438 | .875 | .313 | .250 | 1.000 | 1.750 | 2.000 | 1.500 | .750 | .250 | .270 .260 |

* Key supplied

Bore Sizes and Keyways

| Size | Bore Dia. | Keyway |
|------|-----------|-------------|
| 825 | 1.125 | 1/4 x 1/8 |
| | 1.250 | 1/4 x 1/8 |
| | 1.375 | 5/16 x 3/32 |

EC-1000, EC-1225



Specifications

| Model Size | Voltage DC | Static Torque (lb. ft.) | Max. Speed RPM | Inertia-WR ² (lb. ft ²) | | | Inner Sleeve | Total Weight lbs. |
|------------|------------|-------------------------|----------------|--|-------|--------------|--------------|-------------------|
| | | | | Arm. & Hub | Rotor | Outer Sleeve | | |
| EC-1000 | 6 | 240 lb. ft. | 2000 | .720 | .894 | .129 | .036 | 41 |
| | 24 | 240 lb. ft. | 2000 | .720 | .894 | .129 | .036 | 41 |
| | 90 | 240 lb. ft. | 2000 | .720 | .894 | .129 | .036 | 41 |
| EC-1225 | 6 | 465 lb. ft. | 2000 | 1.8 | 2.4 | .129 | .061 | 85 |
| | 24 | 465 lb. ft. | 2000 | 1.8 | 2.4 | .129 | .061 | 85 |
| | 90 | 465 lb. ft. | 2000 | 1.8 | 2.4 | .129 | .061 | 85 |

Bore Sizes and Keyway

| Size | Bore Dia. | Keyway |
|------|-----------|--------------|
| 1000 | 1.375 | *5/15 x 5/32 |
| | 1.500 | *3/8 x 11/64 |
| | 1.625 | *3/8 x 1/8 |
| 1225 | 1.625 | *3/8 x 5/32 |
| | 1.875 | *1/2 x 1/4 |
| | 2.125 | *1/2 x 3/16 |

*Key Furnished

All dimensions are nominal, unless otherwise noted.

| Size | A Max. | B Dia. | C | D Min. | E Dia. | F Dia. | G | H | I | J | K Max. | L | M |
|------|--------|--------|-------|--------|--------|------------------|------|--------------------------|------|------|--------|-------|-------|
| 1000 | 10.328 | 6.531 | 6.344 | 1.750 | 2.875 | 2.9375 2.9365 | .344 | 5/16-18 UNC -3A x 3/8 | .188 | .750 | 3.969 | 6.000 | 1.547 |
| 1225 | 12.672 | 7.531 | 6.969 | 2.234 | 3.625 | 3.750 3.749 | .406 | 5/81-16 UNC -3A x 3/4 | .375 | .859 | 5.219 | 7.781 | 1.547 |

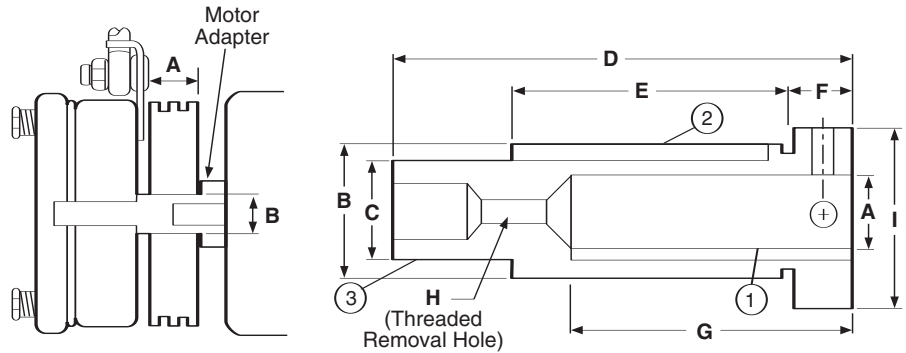
| Size | N Max. | O | P | Q Max. | R* | S | T | U | V | W | X | Y |
|------|--------|----------------|-------|--------|-----------|-------|-------|-------|------|------|------|------|
| 1000 | 9.031 | 5/16-18 UNC-2A | 1.547 | 5.281 | 3/4 x 1/8 | 7.688 | 3.750 | 6.125 | .875 | .344 | .375 | .750 |
| 1225 | 11.016 | 5/16-18 UNC-2A | 1.547 | 7.047 | 7/8 x 1/8 | 8.688 | 3.750 | 7.000 | .875 | .344 | .375 | .750 |

| Size | Z | AA | BB | CC | DD Dia. | EE | FF | GG Dia. | HH | II | JJ | KK | LL | MM | NN | OO |
|------|--------|----|------|------|--------------|------|------|---------|------|-------|-------|-------|-------|------|------|--------------|
| 1000 | 16.625 | 17 | .750 | .375 | .330 .321 | .438 | .875 | .313 | .250 | 1.000 | 1.750 | 2.000 | 1.500 | .750 | .250 | .270 .260 |
| 1225 | 16.625 | 17 | .750 | .375 | .330 .321 | .438 | .875 | .313 | .250 | 1.000 | 1.750 | 2.000 | 1.500 | .750 | .250 | .270 .260 |

* Key supplied

Optional Motor Shaft Adapter

Ten motor shaft adapters are available as an option for mounting Electro-Brakes on single shaft extension motors. For double shaft extension motors the adapter can be eliminated. A standard sheave, pulley, or sprocket, with either a tapered bushing or straight bore, can be installed on the shaft adapter. The Electro Brake is mounted on the end of the shaft adapter and the complete assembly fits onto the motor shaft and is secured with setscrews. Fitting the belts or chain and attaching the torque arm completes the installation.



All dimensions are nominal unless otherwise noted.

| Model | A | Key Kwy. Part No. ① | B | Key Kwy. Part No. ② | C | Key Kwy. Part No. ③ | Dodge Bushing Size | D | E | F | G | H | I | | |
|---------|-------|------------------------|----------|------------------------|--------------|------------------------|--------------------------|--------------|-----------------|------------------|-------|--------------|-------|---------------|-------|
| EB-375 | 5/8 | 3/16x 3/32 * | 7/8 | 3/16x 3/32 | 590-0016 | 5/8 | 3/16x 3/32 | 590-0043 | None | 4.391 4.359 | 2 | .391 .359 | 2 | 1/4-20 UNC | 1.125 |
| EB-375 | 7/8 | 3/16x 3/32 * | 1-1/4 | 1/4x 1/8 | 590-0022 | 5/8 | 3/16x 3/32 | 590-0043 | None | 4.578 4.742 | 2-1/4 | .516 .484 | 2-1/4 | | 1.500 |
| EB-475 | 1-1/8 | 1/4x 1/8 * | 1-5/8 | 3/8x 3/16 | 590-0041 | 1 | 1/4x 1/8 | ** | #1008 1" | 4.516 4.484 | 2-3/4 | .641 .609 | 2-3/4 | 1/2-13 UNC | 1.750 |
| EB-650 | 1-3/8 | 5/16x 5/32 * | 2 | 1/2x 1/4 | 590-0042 | 1-3/8 | 5/16x 5/32 | 590-0044 | #1310 1-3/8" | 5.547 5.515 | 3-3/8 | .641 .609 | 3-3/8 | 1/2-13 UNC | 2.125 |
| EB-650 | 1-5/8 | 3/8x 3/16 * | 2-1/4 | 1/2x 1/4 | 590-0042 | 1-3/8 | 5/16x 5/32 | 590-0044 | #1310 1-3/8" | 6.172 6.140 | 4 | .641 .609 | 4 | | 2.375 |
| EB-1000 | 1-5/8 | 3/8x 3/16 * | 2-15/16 | 3/4x 7/16 | 590-0052 | 1-5/8 | 3/8x 7/32 | ** | #1615 1-5/8" | 8.297 8.265 | 5-1/4 | | 5 | 3/4-10 UNC | 2.937 |
| EB-1000 | 1-7/8 | 1/2x 7/32 * | 2-15/16 | 3/4x 7/16 | 590-0052 | 1-5/8 | 3/8x 7/32 | ** | #1615 1-5/8" | | | | | | 2.937 |
| EB-1000 | 2-1/8 | 1/2x 1/8 | 590-0062 | 2-15/16 | 3/4x 5/16 | 590-0069 | 1-5/8 | 3/8x 7/32 | ** | #1615 1-5/8" | | | | | 2.937 |
| EB-1225 | 2-1/8 | 1/2x 7/32 * | 3-3/4 | 7/8x 7/16 | 590-0049 | 2-1/8 | 1/2x 9/32 | 590-0048 | #2517 2-1/8" | 10.672 10.640 | 7-1/4 | | 6-7/8 | 7/8-9 UNC | 3.750 |
| EB-1225 | 2-3/8 | 5/8x 9/32 * | 3-3/4 | 7/8x 7/16 | 590-0049 | 2-1/8 | 1/2x 9/32 | 590-0048 | #2517 2-1/8" | | | | | | 3.750 |

* Standard Square Key Furnished with Motor.

** Special Key Furnished with Bushing.

Note: For adapter part numbers, see page 108.

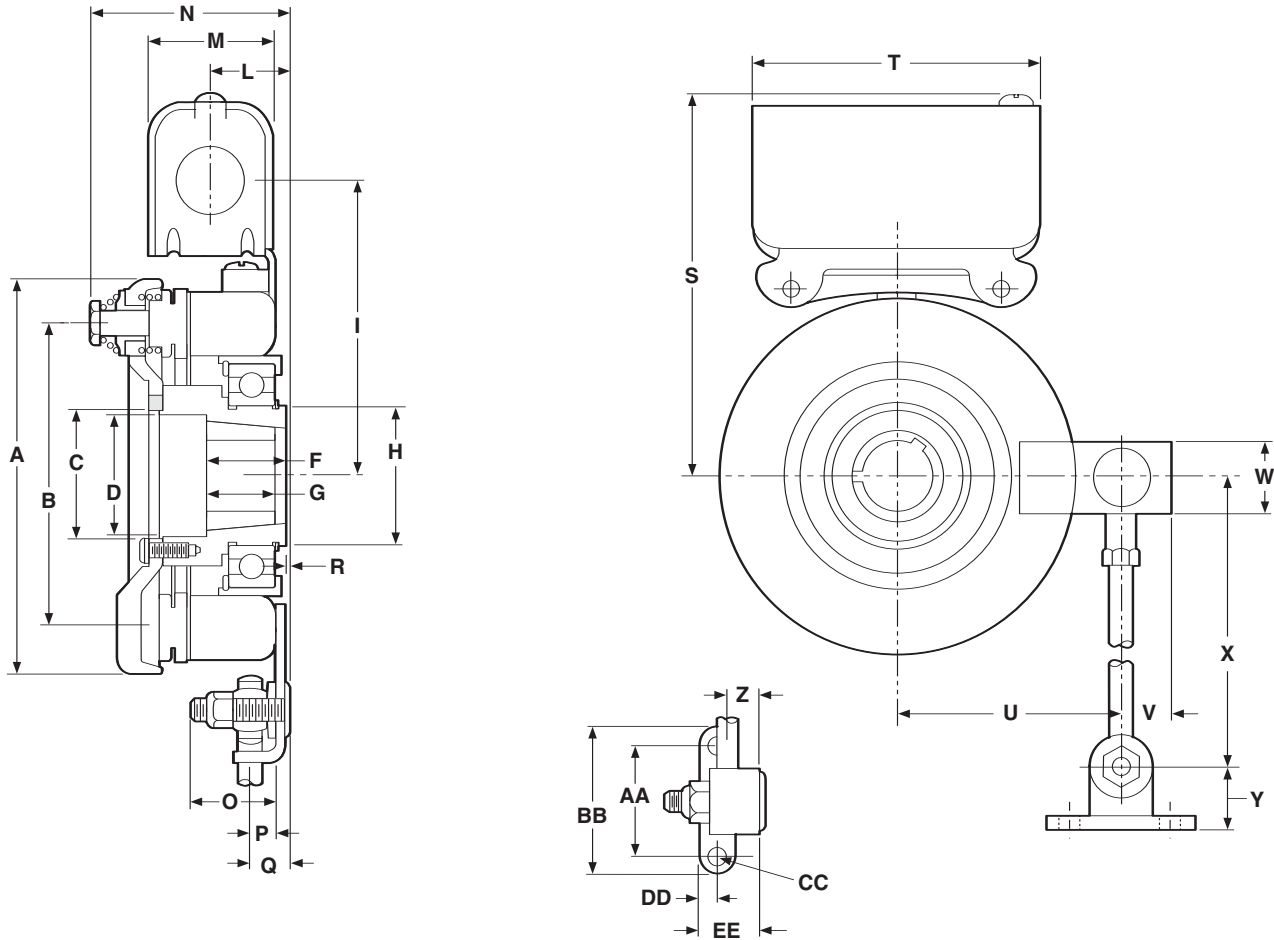
Part Numbers

| Model Size | Bore Size | Voltage DC | Part No. |
|------------|----------------|------------|--------------|
| EB-375 | 1/2" | 6 | 5380-170-005 |
| | | 24 | 5380-170-006 |
| | | 90 | 5380-170-004 |
| | 5/8" | 6 | 5380-170-003 |
| | | 24 | 5380-170-007 |
| | | 90 | 5380-170-002 |
| EB-475 | 1/2" to 1" | 6 | 5381-170-003 |
| | | 24 | 5381-170-004 |
| | | 90 | 5381-170-002 |
| EB-650 | 1/2" to 1-3/8" | 6 | 5382-170-003 |
| | | 24 | 5382-170-005 |
| | | 90 | 5382-170-002 |

| Model Size | Bore Size | Voltage DC | Part No. |
|------------|----------------|------------|--------------|
| EB-825 | 1/2" to 1-1/2" | 6 | 5383-170-002 |
| | | 24 | 5383-170-004 |
| | | 90 | 5383-170-005 |
| EB-1000 | 1/2" to 1-5/8" | 6 | 5384-170-003 |
| | | 24 | 5384-170-005 |
| | | 90 | 5384-170-002 |
| EB-1225 | 1/2" to 2-12" | 6 | 5385-170-003 |
| | | 24 | 5385-170-005 |
| | | 90 | 5385-170-002 |

Note: EB-375 also available in some metric bores.
EB-475-1225 use bushings which are available in metric bores.

EB-375, EB-475, EB-650



Adapter Requirements

For thru-shaft mounting, specify bore size. For EB-475 and EB-650 order bushing separately. EB-375 does not require a bushing. (See pages 235 and 236)

For motor mounting, order adapter separate (see page 59).

Bore Sizes and Keyway

| Size | Bore Dia. | Keyway |
|------|-------------|-------------|
| 375 | .501/.500 | 1/8 x 1/16 |
| | .626/.625 | 3/16 x 3/32 |
| 475 | .500/.563 | 1/8 x 1/16 |
| | .625/.875 | 3/16 x 3/32 |
| | .938/1.000 | *1/4 x 1/8 |
| 650 | .500/.563 | 1/8 x 1/16 |
| | .625/.875 | 3/16 x 3/32 |
| | 1.250/1.313 | 1/4 x 1/8 |
| | 1.313/1.375 | 5/16 x 5/32 |

*Key Furnished

All dimensions are nominal, unless otherwise noted.

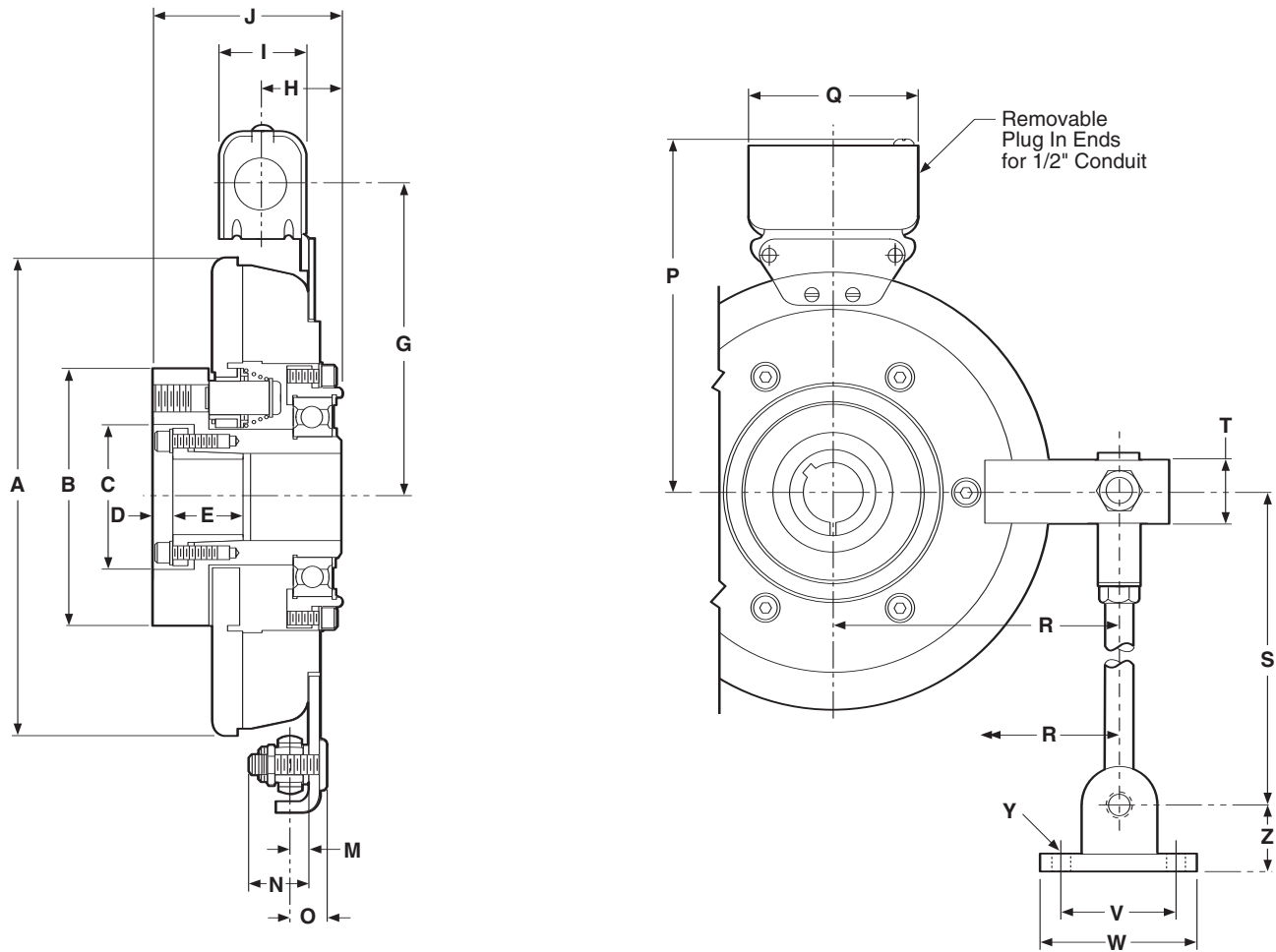
| Size | A Max. | B Dia. | C Min. | D Dia. | E | F | G | H Dia. | I | J | K | L | M | N Max. | O |
|------|--------|--------|--------|--------|------|-------|-------|--------|-------|------------------------|------|-------|-------|--------|-------|
| 375 | 4.078 | 3.125 | .7505 | – | .031 | 1.656 | – | 1.375 | 3.344 | 10-32 UNF -3A x 1/4 | .188 | 1.047 | 1.547 | 2.438 | .844 |
| 475 | 5.172 | 4.000 | 1.663 | 1.594 | – | 1.000 | 1.000 | 1.781 | 3.875 | – | – | .986 | 1.547 | 2.922 | 1.094 |
| 650 | 6.578 | 5.125 | 2.343 | 2.281 | – | 1.313 | 1.000 | 2.563 | 4.656 | – | – | .986 | 1.547 | 3.109 | 1.031 |

| Size | P | Q | R | S Max. | T | U | V | W | X | Y | Z | AA | BB | CC | DD | EE |
|------|------|------|--------------|--------|-------|-------|------|-------|--------|------|------|-------|-------|--------------|------|------|
| 375 | .281 | .625 | .094 Min. | 4.453 | 3.750 | 2.453 | .666 | 1.000 | 8.000 | .635 | .359 | 1.500 | 2.000 | .270 .260 | .250 | .781 |
| 475 | .313 | .531 | .125 Max. | 4.984 | 3.750 | 3.093 | .697 | 1.000 | 10.000 | .635 | .391 | 1.500 | 2.000 | .270 .260 | .250 | .781 |
| 650 | .344 | .641 | .203 Max. | 5.766 | 3.750 | 4.063 | .843 | 1.125 | 11.000 | .635 | .438 | 1.500 | 2.000 | .270 .260 | .250 | .781 |

Specifications

| Model Size | Voltage DC | Static Torque (lb. ft.) | Max. Speed RPM | Inertia-WR ² (lb. ft ²) | | Total Weight lbs. |
|------------|------------|-------------------------|----------------|--|------|-------------------|
| | | | | Arm. & Carrier | Hub | |
| EB-375 | 6, 24, 90 | 16 | 5000 | .010 | .001 | 4 |
| EB-475 | 6, 24, 90 | 30 | 4500 | .072 | .006 | 7 |
| EB-650 | 6, 24, 90 | 95 | 3600 | .106 | .010 | 11.3 |

EB-825

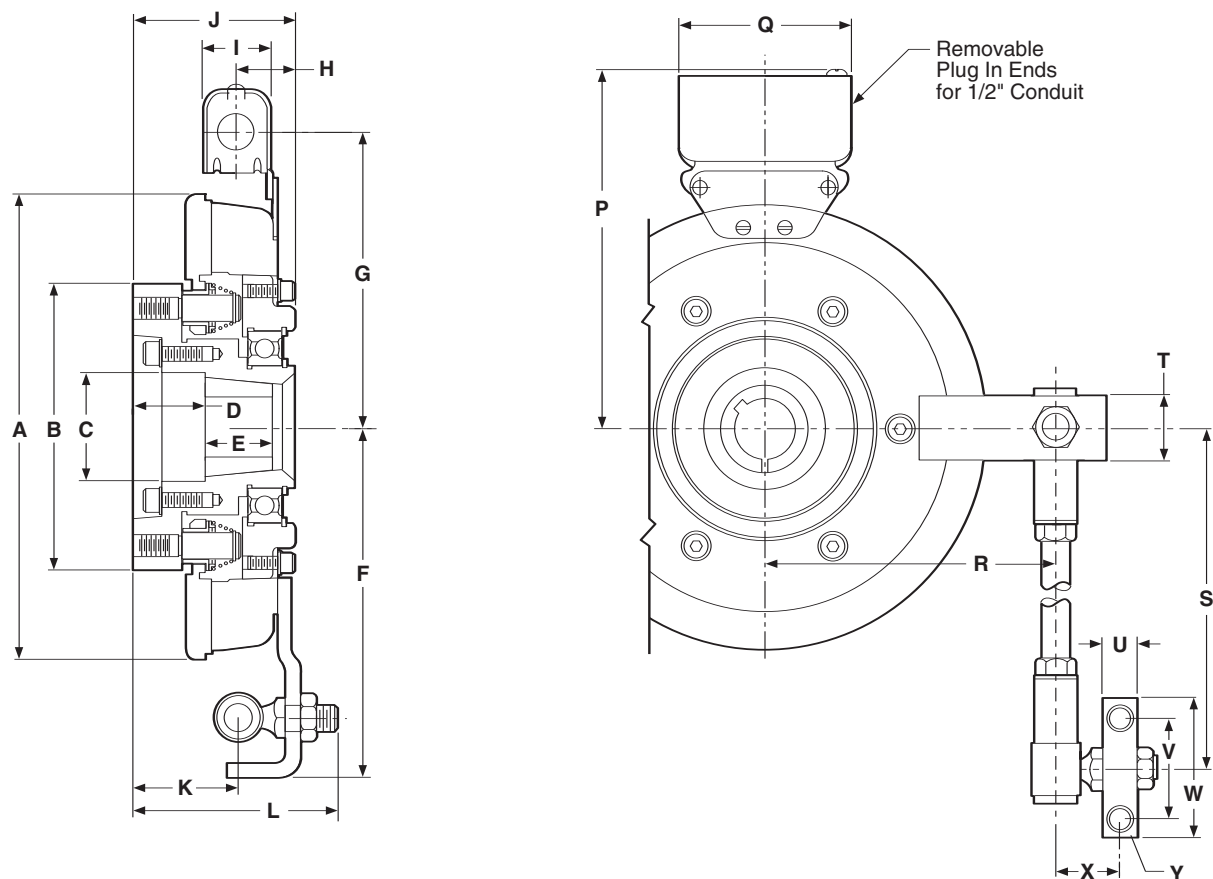


| Size | A Max. | B Max. | C Dia. | D | E | F | G | H | I | J Max. | K | L | M |
|------|--------|--------|--------|------|-------|---|-------|-------|-------|--------|---|---|------|
| 825 | 8.656 | 4.625 | 2.625 | .563 | 1.250 | - | 5.281 | 1.344 | 1.547 | 3.375 | - | - | .344 |

| Size | N | O | P Max. | Q | R | S | T | U | V | W | X | Y | Z |
|------|-------|------|--------|-------|-------|--------|-------|---|-------|-------|---|--------------|------|
| 825 | 1.031 | .641 | 6.813 | 3.750 | 4.813 | 11.000 | 1.125 | - | 1.500 | 2.000 | - | .270 .260 | .781 |

Specifications

| Model Size | Voltage DC | Static Torque lb. ft. | Max. Speed RPM | Inertia-WR ² (lb. ft ²) Arm. & Hub | Total Weight lbs. |
|------------|------------|-----------------------|----------------|--|-------------------|
| EB-825 | 6, 24, 90 | 125 | 3600 | .459 | 20 |



Adapter Requirements

For thru-shaft mounting, specify bore size. Order bushing separately.

For motor mounting order adapter separate (see page 59).

| Size | A Max. | B Max. | C Dia. | D | E | F | G | H | I | J Max. | K | L | M |
|------|--------|--------|--------|-------|-------|-------|-------|-------|-------|--------|-------|-------|---|
| 1000 | 10.328 | 6.344 | 2.563 | 1.563 | 1.500 | 7.688 | 6.531 | 1.281 | 1.547 | 3.531 | 2.266 | 4.531 | - |
| 1225 | 12.672 | 6.969 | 3.391 | .875 | 1.750 | 8.438 | 7.531 | 1.297 | 1.547 | 3.719 | 2.453 | 4.703 | - |

| Size | N | O | P Max. | Q | R | S | T | U | V | W | X | Y | Z |
|------|---|---|--------|-------|---|--------|-------|------|-------|-------|-------|--------------|---|
| 1000 | - | - | 7.688 | 3.750 | - | 18.000 | 1.500 | .750 | .2375 | 3.375 | 1.438 | .413 .404 | - |
| 1225 | - | - | 8.688 | 3.750 | - | 18.000 | 1.500 | .750 | 2.375 | 3.375 | 1.438 | .413 .404 | - |

Specifications

| Model Size | Voltage DC | Static Torque lb. ft. | Max. Speed RPM | Inertia-WR ² (lb. ft ²) | | Total Weight lbs. |
|------------|------------|-----------------------|----------------|--|------|-------------------|
| | | | | Arm. & Hub | Hub | |
| EB-1000 | 6, 24, 90 | 240 | 2000 | .720 | .129 | 35.5 |
| EB-1225 | 6, 24, 90 | 465 | 2000 | 1.8 | .129 | 52.5 |

Distribuidor Autorizado e Importador - Arten Freios e Embreagens Ltda.

Fone: (11) 5594-8333 • Fax (11) 5589-2422 - arten@arten.com.br • www.arten.com.br