

MEROBEL

Worldwide locations



France

MEROBEL S.A.
ZI - BP 79
45210 Ferrières
France

Ph. +33 2 38 94 42 00
Fax +33 2 38 94 42 99

Web : www.merobel.com
E-mail : merobel@merobel.com



USA

ANDANTEX USA Inc.
1705 Valley Road
Wanamassa
USA

Ph. +1 732 493 2812
Fax +1 732 493 2949

Web : www.andantex.com
E-mail : info@andantex.com



Italia

ANDANTEX SpA
Via Fratelli di Dio 2/A
20063 Cernusco sul Naviglio (MI)
Italia

tel. +39 02 92 17 091
Fax +39 02 92 100 455

Web : www.andantex.it
E-mail : andmec@andantex.it



United-Kingdom

ANDANTEX Ltd
Rowley Drive
Coventry CV3 4LS
United Kingdom

Ph. +44 24 7630 7722
Fax +44 24 7630 4499

Web : www.andantex-kinematic.com
E-mail : sales@andantex-kinematic.com

Your local agent

Distribuidor Autorizado e Importador

Arten Freios e Embreagens Ltda

Fone: (11) 5594-8333 • Fax (11) 5589-2422

E-mail: arten@arten.com.br • Site: www.arten.com.br



FTC ME12888400 1105

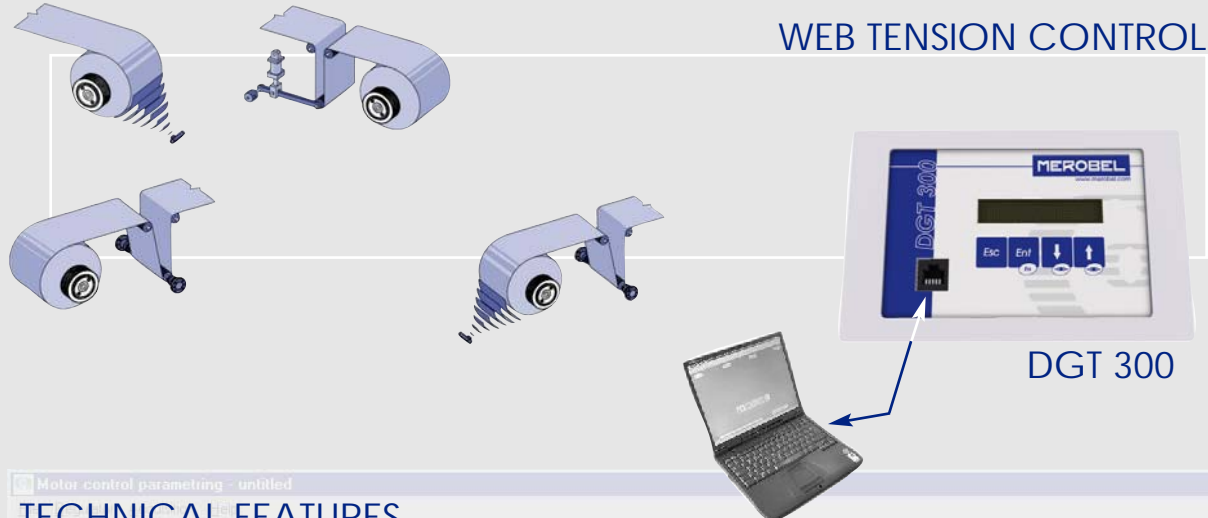
MEROBEL



**DGT
300**



WEB TENSION CONTROL



TECHNICAL FEATURES

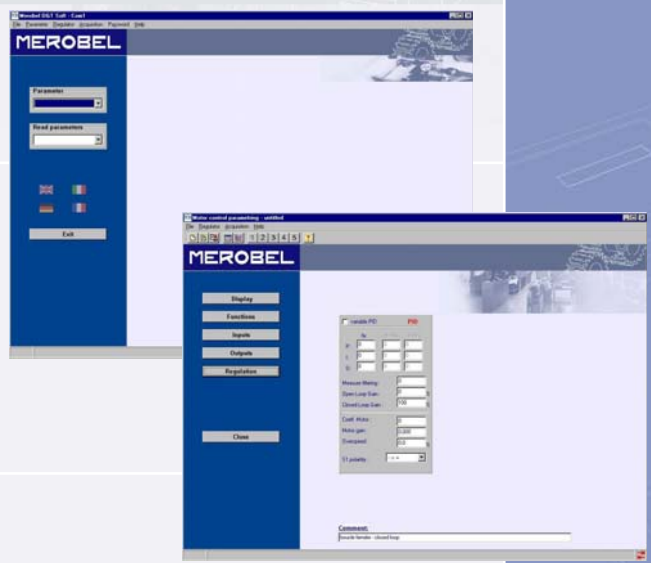
User's friendly
 Selectable language (French / English / German / Italian)
 Selectable Metric or Imperial units
 Easy setup by Windows PC based software
 Easy readout with backlit display (2 x 16 digits)
 HOLD and RELEASE mode on front panel keyboard

Advanced regulation capabilities
 Automatic P.I.D. parameters variation function
 Closed loop + open loop mode
 Inertia compensation control
 Smooth starting up with programmable slope
 E-stop torque proportional to the set point
 Adjustable taper function available
 No-Stop web turrets management function
 Five complete built-in memories
 Motors & Drives specific settings available

Fully software setting up
 No trimmer adjustment
 No dip switches configuration
 Unlimited configuration records by software

Large compatibility
 Compatible with any current load cell technologies
 Convenient for one or two, half or full bridge load cells
 Direct input available for US sensors

Built-in PWM Power Supply
 Up to 1.5 Amp available as PWM output voltage
 No need for external power supply with Merobel Brakes



Three mounting alternatives
 Through a front panel
 On rear panel (option)
 On a DIN rail (option)

Standard supply voltage
 by 24 V AC or DC

CE / CEM compatible



DGT 300 DIGITAL CONTROLLER

SPECIFICATIONS

		Inputs	Supply
Set point (external)	V DC	0 to 10	Power supply V 24 AC / DC
Meas. / Dia. / Tacho	V DC	0 to 10	Max consumption VA 40
Logic (Ext. rem. control)	V DC / mA	5 to 24 / 15 max.	
		Supply Voltage Outputs	
Analog 1 / 2	V DC	-10 to +10	Load Cells V DC 5 or 10 (programmable)
Logic 1 / 2	mA	NPN	US Sensor V DC 24
Output control PWM	Ohms / A	4 to 20 / 1.5	
		Temperature	
		Operating	° C 0 to 40

DIMENSIONS



Front panel cutting

WIRING

Com : 0 V
 A01 : analog output control 1 (-10 to +10 V)
 A02 : analog output control 2 (-10 to +10 V)
 SetP : set point input (0 to 10V, or potentiometer)
 +10V : potentiometer supply
 TC : tachometer input (0 to 10 V)
 DM : diameter input
 +24V : Ultrasonic sensor supply
 S1- : Signal (-)
 S1+ : Signal (+)
 +5V : load cell or sensor supply
 +24 : supply (24 V AC or DC)
 AL- : output logic reference
 AL1 : logic output 1
 AL2 : logic output 2
 V+ : logic input voltage remote control
 A : logic input 1
 B : logic input 2
 init : INIT
 reg : REG

process configuration
 regulator configuration

Nota : all Com / 0V are linked to the ground